

**RWE Renewables UK Dogger Bank
South (West) Limited**

**RWE Renewables UK Dogger Bank
South (East) Limited**

**Dogger Bank South Offshore
Wind Farms**

**Arboricultural Survey Report, Preliminary
Arboricultural Impact Assessment and Outline
Arboricultural Method Statement**

Part 2 of 2

Pre-Examination Procedural Deadline

Document Date: October 2024

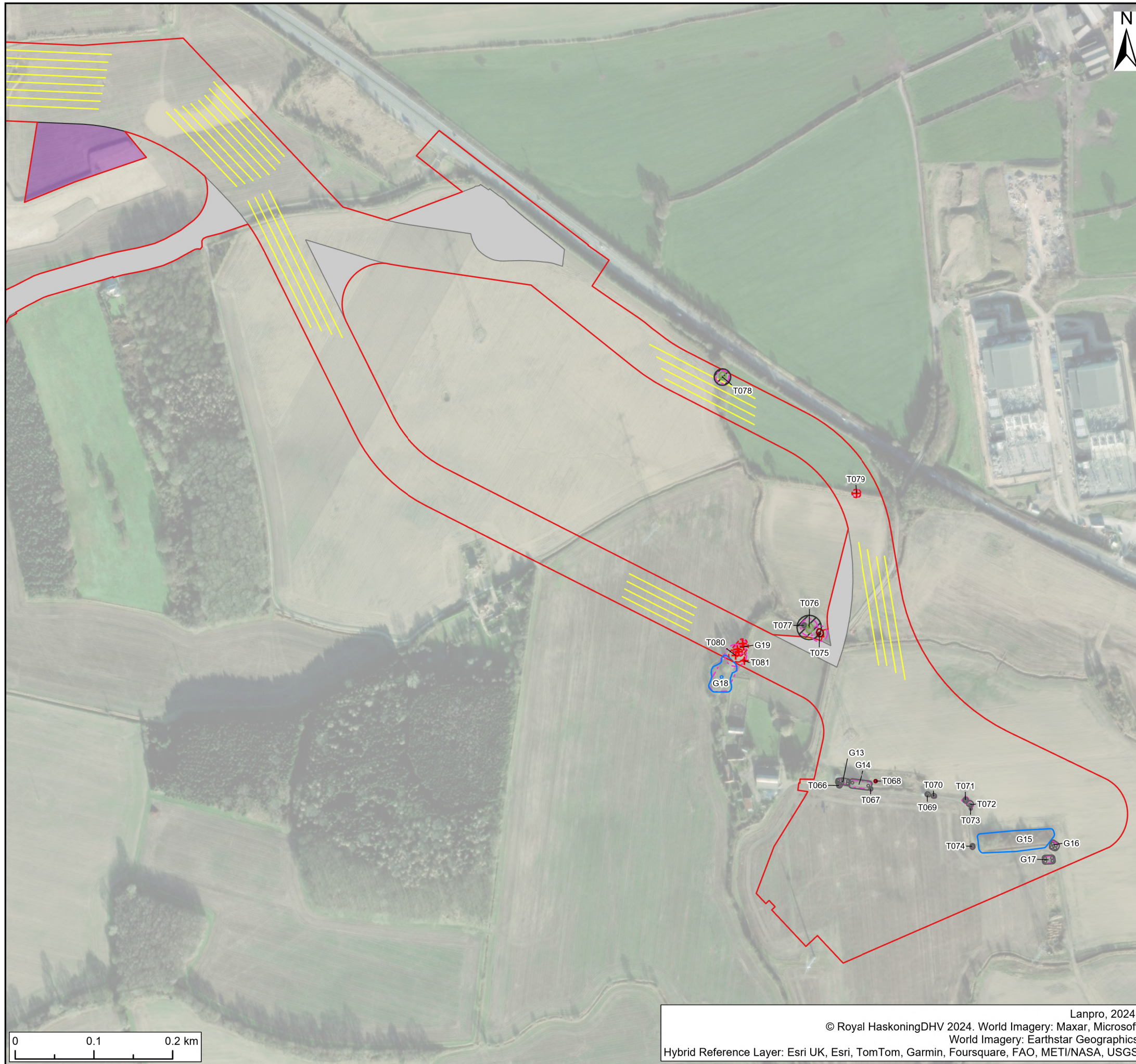
Application Reference: 10.13

Revision Number: 01

Classification: Unrestricted

Company:	RWE Renewables UK Dogger Bank South (West) Limited and RWE Renewables UK Dogger Bank South (East) Limited	Asset:	Development		
Project:	Dogger Bank South Offshore Wind Farms	Sub Project/Package	Consents		
Document Title or Description:	Arboricultural Survey Report, Preliminary Arboricultural Impact Assessment and Outline Arboricultural Method Statement Part 2 of 2				
Document Number:	005403973-01	Contractor Reference Number:	PC2340-LAN-ON-ZZ-RP-Z-0172		
<p><i>COPYRIGHT © RWE Renewables UK Dogger Bank South (West) Limited and RWE Renewables UK Dogger Bank South (East) Limited, 2024. All rights reserved.</i></p> <p><i>This document is supplied on and subject to the terms and conditions of the Contractual Agreement relating to this work, under which this document has been supplied, in particular:</i></p> <p>LIABILITY</p> <p><i>In preparation of this document RWE Renewables UK Dogger Bank South (West) Limited and RWE Renewables UK Dogger Bank South (East) Limited has made reasonable efforts to ensure that the content is accurate, up to date and complete for the purpose for which it was contracted. RWE Renewables UK Dogger Bank South (West) Limited and RWE Renewables UK Dogger Bank South (East) Limited makes no warranty as to the accuracy or completeness of material supplied by the client or their agent.</i></p> <p><i>Other than any liability on RWE Renewables UK Dogger Bank South (West) Limited and RWE Renewables UK Dogger Bank South (East) Limited detailed in the contracts between the parties for this work RWE Renewables UK Dogger Bank South (West) Limited and RWE Renewables UK Dogger Bank South (East) Limited shall have no liability for any loss, damage, injury, claim, expense, cost or other consequence arising as a result of use or reliance upon any information contained in or omitted from this document.</i></p> <p><i>Any persons intending to use this document should satisfy themselves as to its applicability for their intended purpose.</i></p> <p><i>The user of this document has the obligation to employ safe working practices for any activities referred to and to adopt specific practices appropriate to local conditions.</i></p>					
Rev No.	Date	Status/Reason for Issue	Author	Checked by	Approved by
01	October 2024	Submission at Pre-Examination Procedural Deadline	Lampro	RWE	RWE

Appendix 5. Preliminary Tree Impact Plans



- Legend:**
- Stem Positions**
 - Category A tree (high quality)
 - Category B tree (moderate quality)
 - Category C tree (low quality)
 - Category U tree (very low quality)
 - Tree/tree group to be removed
 - Canopy Spread**
 - Category A tree (high quality)
 - Category B tree (moderate quality)
 - Category C tree (low quality)
 - Category U tree (very low quality)
 - Tree/tree group to be removed
 - Tree Pruning
 - Root Protection Areas
 - Potential Root Impacts
 - Other Features**
 - Veteran Tree Buffer
 - Onshore Development Area
 - Indicative Trenchless Crossing Alignment
 - Indicative Temporary Construction Compound Zones
 - Indicative Zone Of Off Route Access
 - Indicative Permanent Drainage Connections
 - Indicative Road Construction Area
 - Indicative Permanent Drainage Basins
 - Indicative Substation Temporary Construction Compound
 - Indicative Earthworks Extents

Notes:
 All tree locations have been plotted using aerial imagery only, hence the positions of constraints are accurate to approximately +/- 3 metres. Locations of any individual trees within tree groups are indicative only.

Tree reference numbers marked with an asterisk symbol (e.g. G25*) are protected by Tree Preservation Order No. 259 at the Former Broadgates Hospital.

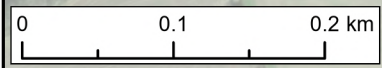
Please refer to the Tree Survey Schedule for full British Standard 5837:2012 tree survey data.

Tree constraints are reflective of tree surveys undertaken between April 2024 – July 2024.

SUI	REV	DATE	DESCRIPTION	DRW	CHK	APR
S2	P02	7/10/2024	Suitable for Information	BH	AL	AL
S2	P01	3/9/2024	Suitable for Information	BH	AL	AL

Title:
**Preliminary Tree Impact Plan
 Sheet 1**

Figure: 1-27	Drawing No: PC2340-LAN-ON-ZZ-DR-Z-0002	
Co-ordinate system: British National Grid	Page Size: A3	Scale: 1:5,000
Project: Dogger Bank South Offshore Wind Farms	Report: Arboricultural Survey Report and Preliminary Arboricultural Impact Assessment	





- Legend:**
- Stem Positions**
 - Category A tree (high quality)
 - Category B tree (moderate quality)
 - Category C tree (low quality)
 - Category U tree (very low quality)
 - Tree/tree group to be removed
 - Canopy Spread**
 - Category A tree (high quality)
 - Category B tree (moderate quality)
 - Category C tree (low quality)
 - Category U tree (very low quality)
 - Tree/tree group to be removed
 - Tree Pruning
 - Root Protection Areas
 - Potential Root Impacts
 - Other Features**
 - Veteran Tree Buffer
 - Onshore Development Area
 - Indicative Trenchless Crossing Alignment
 - Indicative Temporary Construction Compound Zones
 - Indicative Zone Of Off Route Access
 - Indicative Permanent Drainage Connections
 - Indicative Road Construction Area
 - Indicative Permanent Drainage Basins
 - Indicative Substation Temporary Construction Compound
 - Indicative Earthworks Extents

Notes:
 All tree locations have been plotted using aerial imagery only, hence the positions of constraints are accurate to approximately +/- 3 metres. Locations of any individual trees within tree groups are indicative only.

Tree reference numbers marked with an asterisk symbol (e.g. G25*) are protected by Tree Preservation Order No. 259 at the Former Broadgates Hospital.

Please refer to the Tree Survey Schedule for full British Standard 5837:2012 tree survey data.

Tree constraints are reflective of tree surveys undertaken between April 2024 – July 2024.

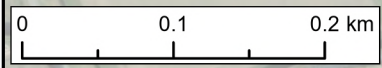
SUI	REV	DATE	DESCRIPTION	DRW	CHK	APR
S2	P02	7/10/2024	Suitable for Information	BH	AL	AL
S2	P01	3/9/2024	Suitable for Information	BH	AL	AL

Title:
**Preliminary Tree Impact Plan
 Sheet 2**

Figure: 1-27 Drawing No: PC2340-LAN-ON-ZZ-DR-Z-0002

Co-ordinate system: British National Grid Page Size: A3 Scale: 1:5,000

Project: **Dogger Bank South Offshore Wind Farms** Report: **Arboricultural Survey Report and Preliminary Arboricultural Impact Assessment**





- Legend:**
- Stem Positions
 - Category A tree (high quality)
 - Category B tree (moderate quality)
 - Category C tree (low quality)
 - Category U tree (very low quality)
 - + Tree/tree group to be removed
 - Canopy Spread
 - Category A tree (high quality)
 - Category B tree (moderate quality)
 - Category C tree (low quality)
 - Category U tree (very low quality)
 - Tree/tree group to be removed
 - Tree Pruning
 - Root Protection Areas
 - Potential Root Impacts
 - Veteran Tree Buffer
 - Tree Preservation Order 259
 - Onshore Development Area
 - Indicative Trenchless Crossing Alignment
 - Indicative Temporary Construction Compound Zones
 - Indicative Zone Of Off Route Access
 - Indicative Permanent Drainage Connections
 - Indicative Road Construction Area
 - Indicative Permanent Drainage Basins
 - Indicative Substation Temporary Construction Compound
 - Indicative Earthworks Extents

Notes:
 All tree locations have been plotted using aerial imagery only, hence the positions of constraints are accurate to approximately +/- 3 metres. Locations of any individual trees within tree groups are indicative only.

Tree reference numbers marked with an asterisk symbol (e.g. G25*) are protected by Tree Preservation Order No. 259 at the Former Broadgates Hospital.

Please refer to the Tree Survey Schedule for full British Standard 5837:2012 tree survey data.

Tree constraints are reflective of tree surveys undertaken between April 2024 – July 2024.

SUI	REV	DATE	DESCRIPTION	DRW	CHK	APR
S2	P02	7/10/2024	Suitable for Information	BH	AL	AL
S2	P01	3/9/2024	Suitable for Information	BH	AL	AL

Title:
**Preliminary Tree Impact Plan
 Sheet 3**

Figure: 1-27 Drawing No: PC2340-LAN-ON-ZZ-DR-Z-0002

Co-ordinate system: British National Grid Page Size: A3 Scale: 1:5,000

Project: Dogger Bank South Offshore Wind Farms Report: Arboricultural Survey Report and Preliminary Arboricultural Impact Assessment





Legend:

- | | | |
|----------------|---|--|
| Stem Positions | <ul style="list-style-type: none"> ● Category A tree (high quality) ● Category B tree (moderate quality) ● Category C tree (low quality) ● Category U tree (very low quality) + Tree/tree group to be removed | <ul style="list-style-type: none"> ▨ Veteran Tree Buffer ▭ Onshore Development Area ▭ Indicative Trenchless Crossing Alignment ▭ Indicative Temporary Construction Compound Zones ▭ Indicative Zone Of Off Route Access ▭ Indicative Permanent Drainage Connections ▭ Indicative Road Construction Area ▭ Indicative Permanent Drainage Basins ▭ Indicative Substation Temporary Construction Compound ▭ Indicative Earthworks Extents |
| Canopy Spread | <ul style="list-style-type: none"> ▭ Category A tree (high quality) ▭ Category B tree (moderate quality) ▭ Category C tree (low quality) ▭ Category U tree (very low quality) ▭ Tree/tree group to be removed ▭ Tree Pruning ▭ Root Protection Areas ▭ Potential Root Impacts | |

Notes:
 All tree locations have been plotted using aerial imagery only, hence the positions of constraints are accurate to approximately +/- 3 metres. Locations of any individual trees within tree groups are indicative only.

Tree reference numbers marked with an asterisk symbol (e.g. G25*) are protected by Tree Preservation Order No. 259 at the Former Broadgates Hospital.

Please refer to the Tree Survey Schedule for full British Standard 5837:2012 tree survey data.

Tree constraints are reflective of tree surveys undertaken between April 2024 – July 2024.

SUI	REV	DATE	DESCRIPTION	DRW	CHK	APR
S2	P02	7/10/2024	Suitable for Information	BH	AL	AL
S2	P01	3/9/2024	Suitable for Information	BH	AL	AL

Title:
 Preliminary Tree Impact Plan
 Sheet 4

Figure: 1-27 Drawing No: PC2340-LAN-ON-ZZ-DR-Z-0002

Co-ordinate system: British National Grid	Page Size: A3	Scale: 1:5,000
--	------------------	-------------------

Project: Dogger Bank South Offshore Wind Farms	Report: Arboricultural Survey Report and Preliminary Arboricultural Impact Assessment
--	--





- Legend:**
- Stem Positions
 - Category A tree (high quality)
 - Category B tree (moderate quality)
 - Category C tree (low quality)
 - Category U tree (very low quality)
 - + Tree/tree group to be removed
 - Canopy Spread
 - Category A tree (high quality)
 - Category B tree (moderate quality)
 - Category C tree (low quality)
 - Category U tree (very low quality)
 - Tree/tree group to be removed
 - Tree Pruning
 - Root Protection Areas
 - Potential Root Impacts
 - ▨ Veteran Tree Buffer
 - ▭ Onshore Development Area
 - ▭ Indicative Trenchless Crossing Alignment
 - ▭ Indicative Temporary Construction Compound Zones
 - ▭ Indicative Zone Of Off Route Access
 - ▭ Indicative Permanent Drainage Connections
 - ▭ Indicative Road Construction Area
 - ▭ Indicative Permanent Drainage Basins
 - ▭ Indicative Substation Temporary Construction Compound
 - ▭ Indicative Earthworks Extents

Notes:
 All tree locations have been plotted using aerial imagery only, hence the positions of constraints are accurate to approximately +/- 3 metres. Locations of any individual trees within tree groups are indicative only.

Tree reference numbers marked with an asterisk symbol (e.g. G25*) are protected by Tree Preservation Order No. 259 at the Former Broadgates Hospital.

Please refer to the Tree Survey Schedule for full British Standard 5837:2012 tree survey data.

Tree constraints are reflective of tree surveys undertaken between April 2024 – July 2024.

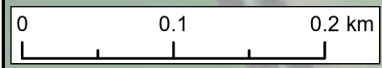
SUI	REV	DATE	DESCRIPTION	DRW	CHK	APR
S2	P02	7/10/2024	Suitable for Information	BH	AL	AL
S2	P01	3/9/2024	Suitable for Information	BH	AL	AL

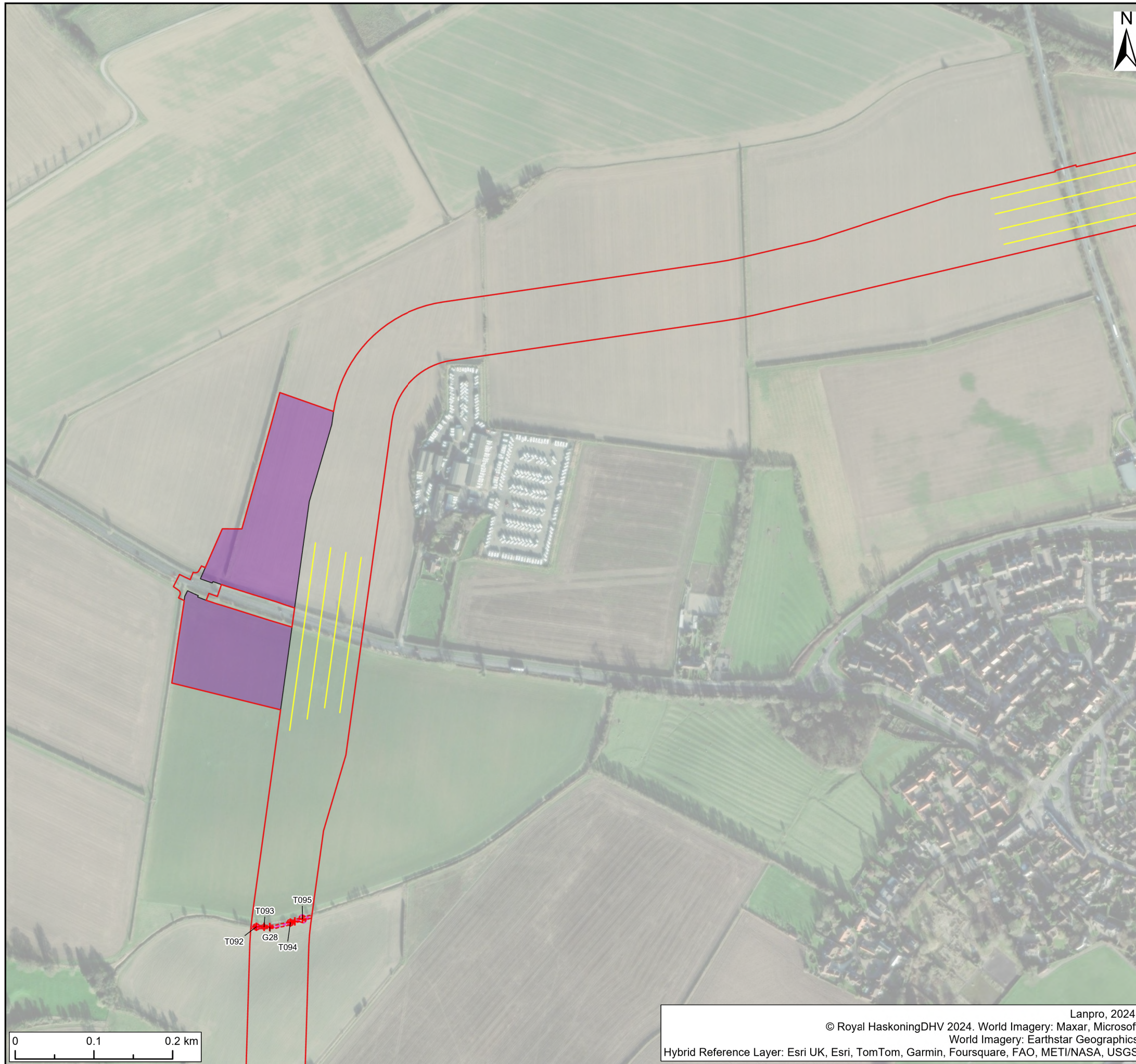
Title:
**Preliminary Tree Impact Plan
 Sheet 5**

Figure: 1-27 Drawing No: PC2340-LAN-ON-ZZ-DR-Z-0002

Co-ordinate system: British National Grid Page Size: A3 Scale: 1:5,000

Project: **Dogger Bank South Offshore Wind Farms** Report: **Arboricultural Survey Report and Preliminary Arboricultural Impact Assessment**





Legend:

- | | | |
|----------------|---|--|
| Stem Positions | <ul style="list-style-type: none"> ● Category A tree (high quality) ● Category B tree (moderate quality) ● Category C tree (low quality) ● Category U tree (very low quality) + Tree/tree group to be removed | <ul style="list-style-type: none"> ▨ Veteran Tree Buffer ▭ Onshore Development Area ▨ Indicative Trenchless Crossing Alignment ▭ Indicative Temporary Construction Compound Zones ▭ Indicative Zone Of Off Route Access ▭ Indicative Permanent Drainage Connections ▭ Indicative Road Construction Area ▭ Indicative Permanent Drainage Basins ▭ Indicative Substation Temporary Construction Compound ▭ Indicative Earthworks Extents |
| Canopy Spread | <ul style="list-style-type: none"> ▭ Category A tree (high quality) ▭ Category B tree (moderate quality) ▭ Category C tree (low quality) ▭ Category U tree (very low quality) ▭ Tree/tree group to be removed ▭ Tree Pruning ▭ Root Protection Areas ▭ Potential Root Impacts | |

Notes:
All tree locations have been plotted using aerial imagery only, hence the positions of constraints are accurate to approximately +/- 3 metres. Locations of any individual trees within tree groups are indicative only.

Tree reference numbers marked with an asterisk symbol (e.g. G25*) are protected by Tree Preservation Order No. 259 at the Former Broadgates Hospital.

Please refer to the Tree Survey Schedule for full British Standard 5837:2012 tree survey data.

Tree constraints are reflective of tree surveys undertaken between April 2024 – July 2024.

SUI	REV	DATE	DESCRIPTION	DRW	CHK	APR
S2	P02	7/10/2024	Suitable for Information	BH	AL	AL
S2	P01	3/9/2024	Suitable for Information	BH	AL	AL

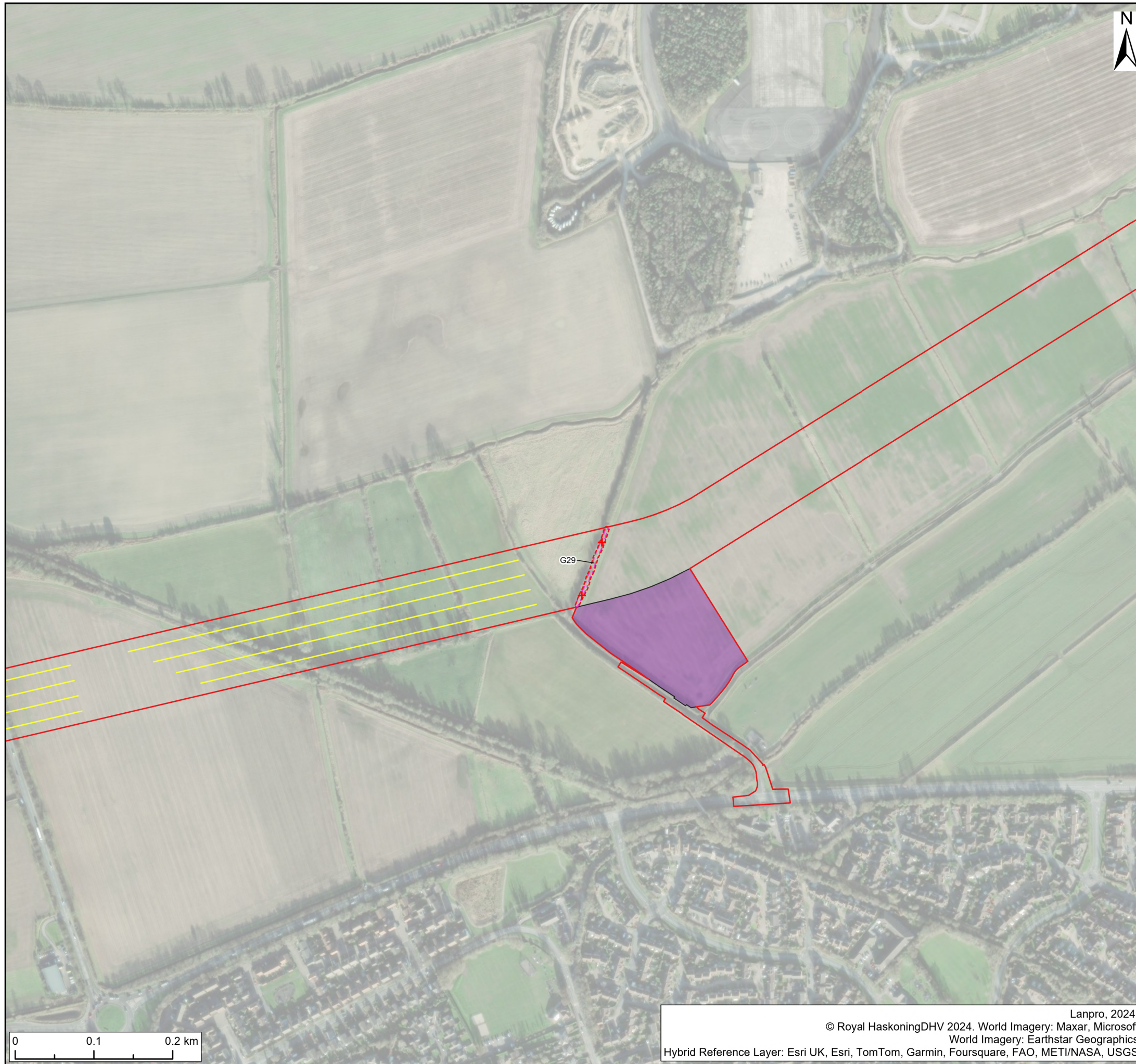
Title:
**Preliminary Tree Impact Plan
Sheet 6**

Figure: 1-27 Drawing No: PC2340-LAN-ON-ZZ-DR-Z-0002

Co-ordinate system: British National Grid Page Size: A3 Scale: 1:5,000

Project: **Dogger Bank South Offshore Wind Farms** Report: **Arboricultural Survey Report and Preliminary Arboricultural Impact Assessment**





- Legend:**
- | | | |
|----------------|---|--|
| Stem Positions | <ul style="list-style-type: none"> ● Category A tree (high quality) ● Category B tree (moderate quality) ● Category C tree (low quality) ● Category U tree (very low quality) + Tree/tree group to be removed | <ul style="list-style-type: none"> ▨ Veteran Tree Buffer ▭ Onshore Development Area — Indicative Trenchless Crossing Alignment ▭ Indicative Temporary Construction Compound Zones ▭ Indicative Zone Of Off Route Access — Indicative Permanent Drainage Connections ▭ Indicative Road Construction Area ▭ Indicative Permanent Drainage Basins ▭ Indicative Substation Temporary Construction Compound ▭ Indicative Earthworks Extents |
| Canopy Spread | <ul style="list-style-type: none"> ▭ Category A tree (high quality) ▭ Category B tree (moderate quality) ▭ Category C tree (low quality) ▭ Category U tree (very low quality) ▭ Tree/tree group to be removed ▭ Tree Pruning ▭ Root Protection Areas ▭ Potential Root Impacts | |

Notes:
 All tree locations have been plotted using aerial imagery only, hence the positions of constraints are accurate to approximately +/- 3 metres. Locations of any individual trees within tree groups are indicative only.

Tree reference numbers marked with an asterisk symbol (e.g. G25*) are protected by Tree Preservation Order No. 259 at the Former Broadgates Hospital.

Please refer to the Tree Survey Schedule for full British Standard 5837:2012 tree survey data.

Tree constraints are reflective of tree surveys undertaken between April 2024 – July 2024.

SUI	REV	DATE	DESCRIPTION	DRW	CHK	APR
S2	P02	7/10/2024	Suitable for Information	BH	AL	AL
S2	P01	3/9/2024	Suitable for Information	BH	AL	AL

Title:
**Preliminary Tree Impact Plan
 Sheet 7**

Figure: 1-27	Drawing No: PC2340-LAN-ON-ZZ-DR-Z-0002	
Co-ordinate system: British National Grid	Page Size: A3	Scale: 1:5,000
Project: Dogger Bank South Offshore Wind Farms	Report: Arboricultural Survey Report and Preliminary Arboricultural Impact Assessment	





- Legend:**
- Stem Positions
 - Category A tree (high quality)
 - Category B tree (moderate quality)
 - Category C tree (low quality)
 - Category U tree (very low quality)
 - + Tree/tree group to be removed
 - Canopy Spread
 - Category A tree (high quality)
 - Category B tree (moderate quality)
 - Category C tree (low quality)
 - Category U tree (very low quality)
 - Tree/tree group to be removed
 - ▨ Tree Pruning
 - ▨ Root Protection Areas
 - ▨ Potential Root Impacts
 - ▨ Veteran Tree Buffer
 - ▨ Onshore Development Area
 - ▨ Indicative Trenchless Crossing Alignment
 - ▨ Indicative Temporary Construction Compound Zones
 - ▨ Indicative Zone Of Off Route Access
 - ▨ Indicative Permanent Drainage Connections
 - ▨ Indicative Road Construction Area
 - ▨ Indicative Permanent Drainage Basins
 - ▨ Indicative Substation Temporary Construction Compound
 - ▨ Indicative Earthworks Extents

Notes:
 All tree locations have been plotted using aerial imagery only, hence the positions of constraints are accurate to approximately +/- 3 metres. Locations of any individual trees within tree groups are indicative only.

Tree reference numbers marked with an asterisk symbol (e.g. G25*) are protected by Tree Preservation Order No. 259 at the Former Broadgates Hospital.

Please refer to the Tree Survey Schedule for full British Standard 5837:2012 tree survey data.

Tree constraints are reflective of tree surveys undertaken between April 2024 – July 2024.

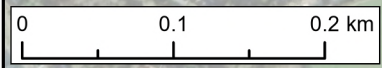
SUI	REV	DATE	DESCRIPTION	DRW	CHK	APR
S2	P02	7/10/2024	Suitable for Information	BH	AL	AL
S2	P01	3/9/2024	Suitable for Information	BH	AL	AL

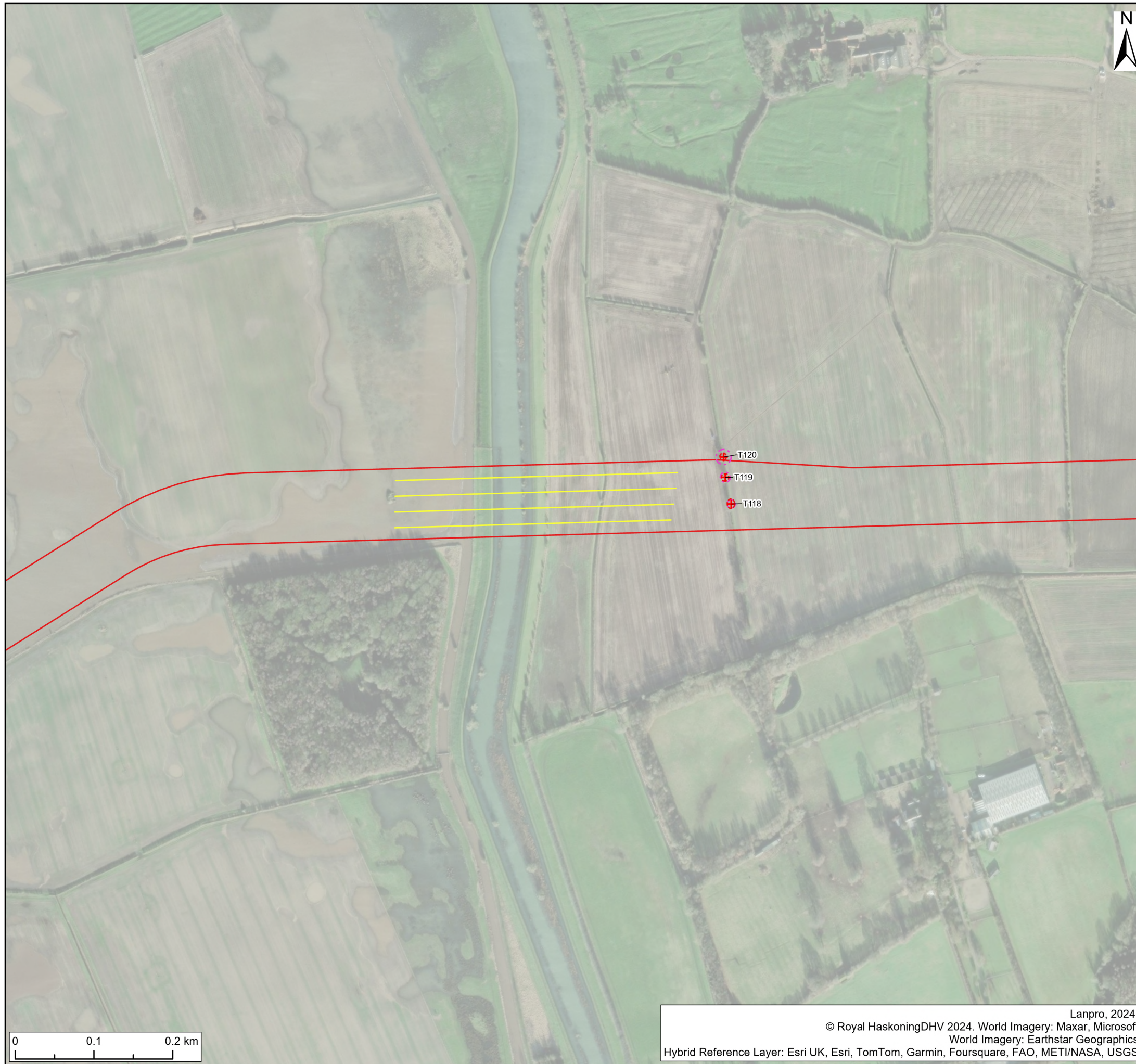
Title:
**Preliminary Tree Impact Plan
 Sheet 8**

Figure: 1-27 Drawing No: PC2340-LAN-ON-ZZ-DR-Z-0002

Co-ordinate system: British National Grid Page Size: A3 Scale: 1:5,000

Project: **Dogger Bank South Offshore Wind Farms** Report: **Arboricultural Survey Report and Preliminary Arboricultural Impact Assessment**





- Legend:**
- Stem Positions
 - Category A tree (high quality)
 - Category B tree (moderate quality)
 - Category C tree (low quality)
 - Category U tree (very low quality)
 - ⊕ Tree/tree group to be removed
 - Canopy Spread
 - Category A tree (high quality)
 - Category B tree (moderate quality)
 - Category C tree (low quality)
 - Category U tree (very low quality)
 - Tree/tree group to be removed
 - ▨ Tree Pruning
 - ▨ Root Protection Areas
 - ▨ Potential Root Impacts
 - ▨ Veteran Tree Buffer
 - ▨ Onshore Development Area
 - ▨ Indicative Trenchless Crossing Alignment
 - ▨ Indicative Temporary Construction Compound Zones
 - ▨ Indicative Zone Of Off Route Access
 - ▨ Indicative Permanent Drainage Connections
 - ▨ Indicative Road Construction Area
 - ▨ Indicative Permanent Drainage Basins
 - ▨ Indicative Substation Temporary Construction Compound
 - ▨ Indicative Earthworks Extents

Notes:
 All tree locations have been plotted using aerial imagery only, hence the positions of constraints are accurate to approximately +/- 3 metres. Locations of any individual trees within tree groups are indicative only.

Tree reference numbers marked with an asterisk symbol (e.g. G25*) are protected by Tree Preservation Order No. 259 at the Former Broadgates Hospital.

Please refer to the Tree Survey Schedule for full British Standard 5837:2012 tree survey data.

Tree constraints are reflective of tree surveys undertaken between April 2024 – July 2024.

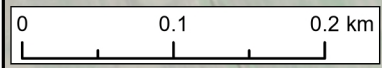
SUI	REV	DATE	DESCRIPTION	DRW	CHK	APR
S2	P02	7/10/2024	Suitable for Information	BH	AL	AL
S2	P01	3/9/2024	Suitable for Information	BH	AL	AL

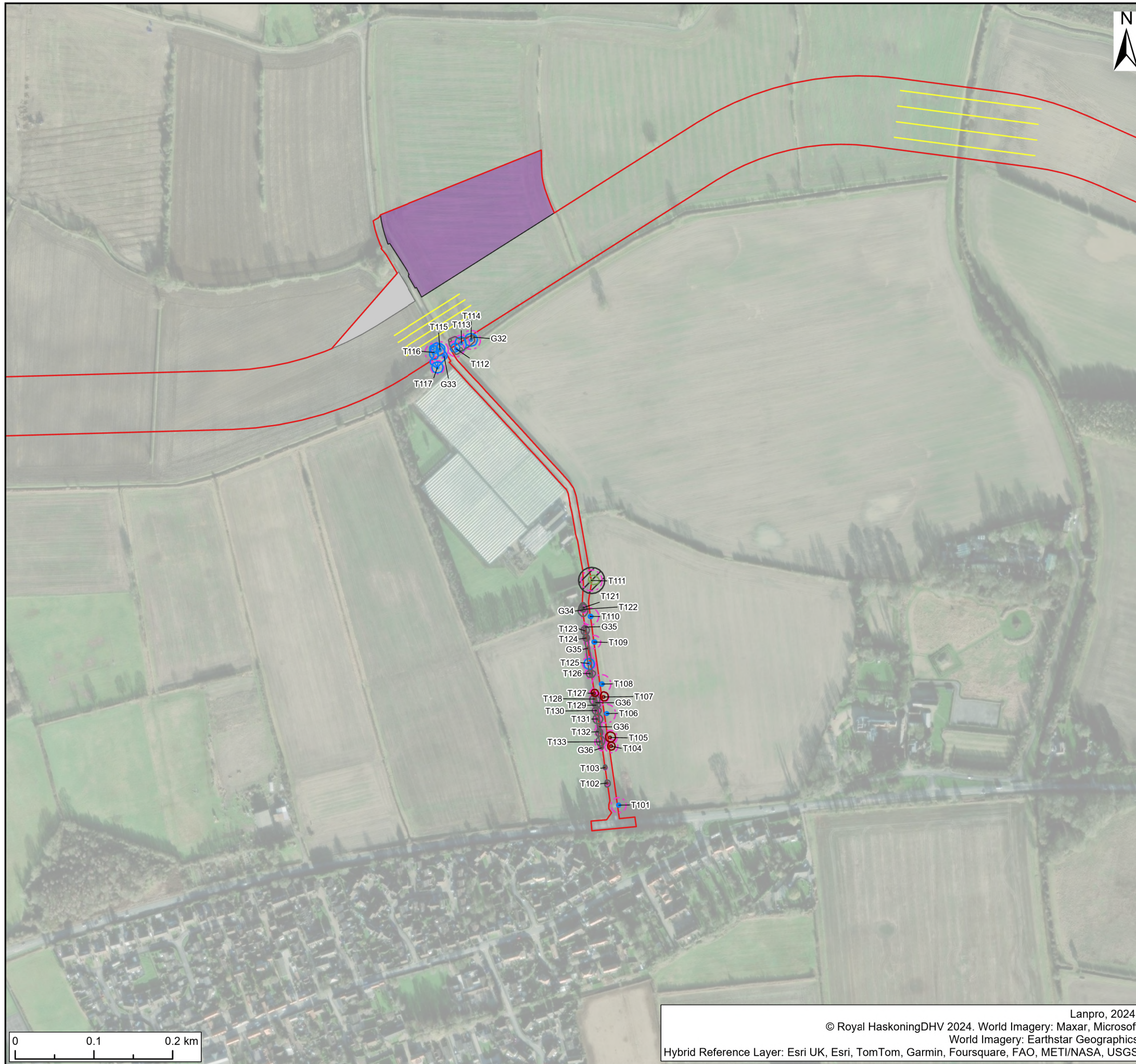
Title:
**Preliminary Tree Impact Plan
 Sheet 9**

Figure: 1-27 Drawing No: PC2340-LAN-ON-ZZ-DR-Z-0002

Co-ordinate system: British National Grid Page Size: A3 Scale: 1:5,000

Project: Dogger Bank South Offshore Wind Farms Report: Arboricultural Survey Report and Preliminary Arboricultural Impact Assessment





- Legend:**
- Stem Positions
 - Category A tree (high quality)
 - Category B tree (moderate quality)
 - Category C tree (low quality)
 - Category U tree (very low quality)
 - Tree/tree group to be removed
 - Canopy Spread
 - Category A tree (high quality)
 - Category B tree (moderate quality)
 - Category C tree (low quality)
 - Category U tree (very low quality)
 - Tree/tree group to be removed
 - Tree Pruning
 - Root Protection Areas
 - Potential Root Impacts
 - Veteran Tree Buffer
 - Onshore Development Area
 - Indicative Trenchless Crossing Alignment
 - Indicative Temporary Construction Compound Zones
 - Indicative Zone Of Off Route Access
 - Indicative Permanent Drainage Connections
 - Indicative Road Construction Area
 - Indicative Permanent Drainage Basins
 - Indicative Substation Temporary Construction Compound
 - Indicative Earthworks Extents

Notes:
 All tree locations have been plotted using aerial imagery only, hence the positions of constraints are accurate to approximately +/- 3 metres. Locations of any individual trees within tree groups are indicative only.

Tree reference numbers marked with an asterisk symbol (e.g. G25*) are protected by Tree Preservation Order No. 259 at the Former Broadgates Hospital.

Please refer to the Tree Survey Schedule for full British Standard 5837:2012 tree survey data.

Tree constraints are reflective of tree surveys undertaken between April 2024 – July 2024.

SUI	REV	DATE	DESCRIPTION	DRW	CHK	APR
S2	P02	7/10/2024	Suitable for Information	BH	AL	AL
S2	P01	3/9/2024	Suitable for Information	BH	AL	AL

Title:
**Preliminary Tree Impact Plan
 Sheet 10**

Figure: 1-27 Drawing No: PC2340-LAN-ON-ZZ-DR-Z-0002

Co-ordinate system: British National Grid Page Size: A3 Scale: 1:5,000

Project: Dogger Bank South Offshore Wind Farms Report: Arboricultural Survey Report and Preliminary Arboricultural Impact Assessment





Legend:

- | | | |
|----------------|---|--|
| Stem Positions | <ul style="list-style-type: none"> ● Category A tree (high quality) ● Category B tree (moderate quality) ● Category C tree (low quality) ● Category U tree (very low quality) + Tree/tree group to be removed | <ul style="list-style-type: none"> ▨ Veteran Tree Buffer ▭ Onshore Development Area — Indicative Trenchless Crossing Alignment ▭ Indicative Temporary Construction Compound Zones ▭ Indicative Zone Of Off Route Access — Indicative Permanent Drainage Connections ▭ Indicative Road Construction Area ▭ Indicative Permanent Drainage Basins ▭ Indicative Substation Temporary Construction Compound ▭ Indicative Earthworks Extents |
| Canopy Spread | <ul style="list-style-type: none"> ▭ Category A tree (high quality) ▭ Category B tree (moderate quality) ▭ Category C tree (low quality) ▭ Category U tree (very low quality) ▭ Tree/tree group to be removed ▭ Tree Pruning ▭ Root Protection Areas ▭ Potential Root Impacts | |

Notes:
 All tree locations have been plotted using aerial imagery only, hence the positions of constraints are accurate to approximately +/- 3 metres. Locations of any individual trees within tree groups are indicative only.

Tree reference numbers marked with an asterisk symbol (e.g. G25*) are protected by Tree Preservation Order No. 259 at the Former Broadgates Hospital.

Please refer to the Tree Survey Schedule for full British Standard 5837:2012 tree survey data.

Tree constraints are reflective of tree surveys undertaken between April 2024 – July 2024.

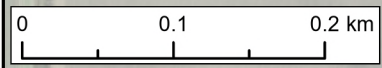
SUI	REV	DATE	DESCRIPTION	DRW	CHK	APR
S2	P02	7/10/2024	Suitable for Information	BH	AL	AL
S2	P01	3/9/2024	Suitable for Information	BH	AL	AL

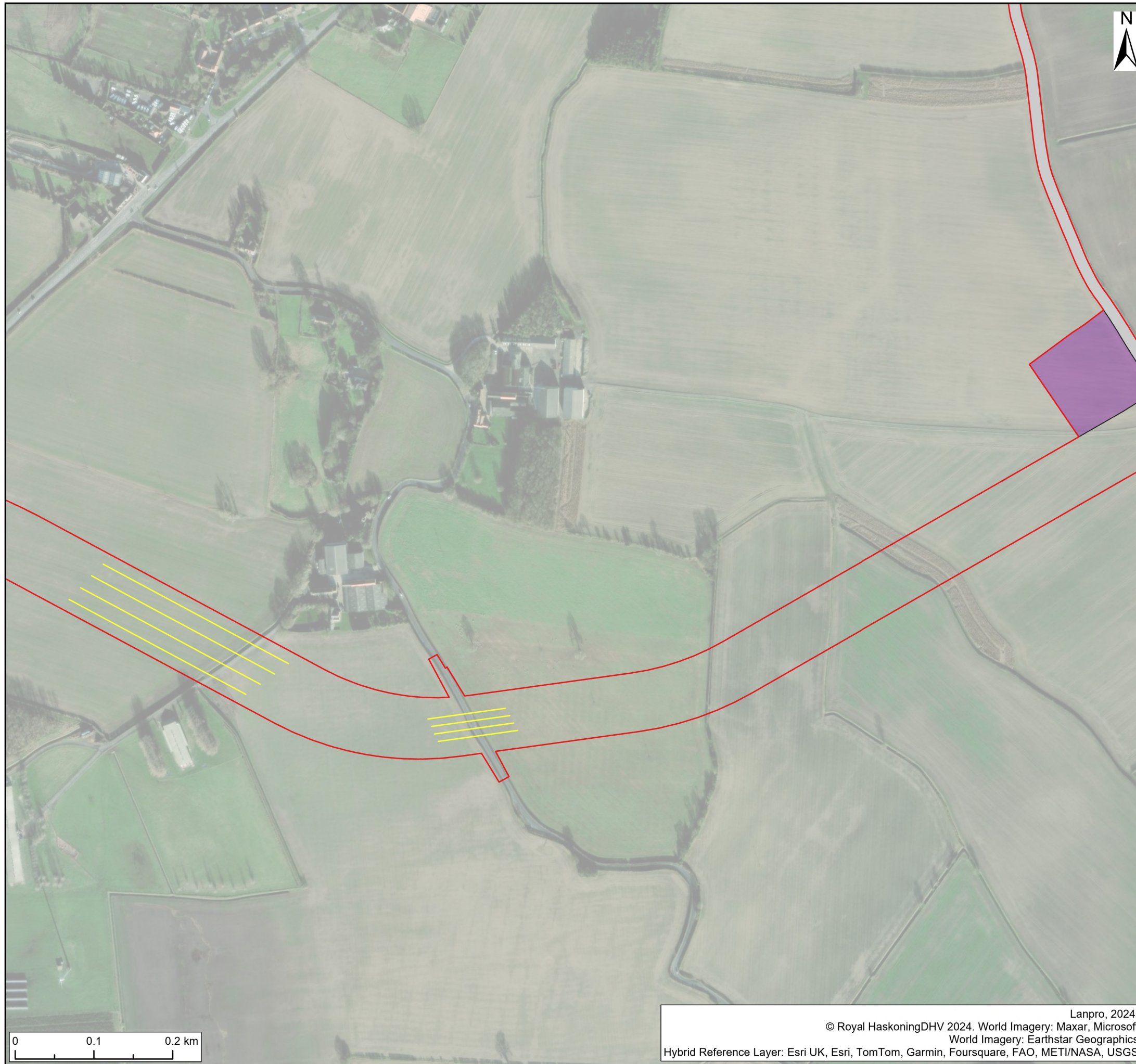
Title:
**Preliminary Tree Impact Plan
 Sheet 11**

Figure: 1-27 Drawing No: PC2340-LAN-ON-ZZ-DR-Z-0002

Co-ordinate system: British National Grid	Page Size: A3	Scale: 1:5,000
--	------------------	-------------------

Project: Dogger Bank South Offshore Wind Farms	Report: Arboricultural Survey Report and Preliminary Arboricultural Impact Assessment
--	--





- Legend:**
- Stem Positions
 - Category A tree (high quality)
 - Category B tree (moderate quality)
 - Category C tree (low quality)
 - Category U tree (very low quality)
 - + Tree/tree group to be removed
 - Canopy Spread
 - Category A tree (high quality)
 - Category B tree (moderate quality)
 - Category C tree (low quality)
 - Category U tree (very low quality)
 - Tree/tree group to be removed
 - Tree Pruning
 - Root Protection Areas
 - Potential Root Impacts
 - ▨ Veteran Tree Buffer
 - ▭ Onshore Development Area
 - ▭ Indicative Trenchless Crossing Alignment
 - ▭ Indicative Temporary Construction Compound Zones
 - ▭ Indicative Zone Of Off Route Access
 - ▭ Indicative Permanent Drainage Connections
 - ▭ Indicative Road Construction Area
 - ▭ Indicative Permanent Drainage Basins
 - ▭ Indicative Substation Temporary Construction Compound
 - ▭ Indicative Earthworks Extents

Notes:
 All tree locations have been plotted using aerial imagery only, hence the positions of constraints are accurate to approximately +/- 3 metres. Locations of any individual trees within tree groups are indicative only.

Tree reference numbers marked with an asterisk symbol (e.g. G25*) are protected by Tree Preservation Order No. 259 at the Former Broadgates Hospital.

Please refer to the Tree Survey Schedule for full British Standard 5837:2012 tree survey data.

Tree constraints are reflective of tree surveys undertaken between April 2024 – July 2024.

SUI	REV	DATE	DESCRIPTION	DRW	CHK	APR
S2	P02	7/10/2024	Suitable for Information	BH	AL	AL
S2	P01	3/9/2024	Suitable for Information	BH	AL	AL

Title:
**Preliminary Tree Impact Plan
 Sheet 12**

Figure: 1-27	Drawing No: PC2340-LAN-ON-ZZ-DR-Z-0002	
Co-ordinate system: British National Grid	Page Size: A3	Scale: 1:5,000
Project: Dogger Bank South Offshore Wind Farms	Report: Arboricultural Survey Report and Preliminary Arboricultural Impact Assessment	





- Legend:**
- Stem Positions
 - Category A tree (high quality)
 - Category B tree (moderate quality)
 - Category C tree (low quality)
 - Category U tree (very low quality)
 - + Tree/tree group to be removed
 - Canopy Spread
 - Category A tree (high quality)
 - Category B tree (moderate quality)
 - Category C tree (low quality)
 - Category U tree (very low quality)
 - Tree/tree group to be removed
 - Tree Pruning
 - Root Protection Areas
 - Potential Root Impacts
 - ▨ Veteran Tree Buffer
 - ▭ Onshore Development Area
 - ▭ Indicative Trenchless Crossing Alignment
 - ▭ Indicative Temporary Construction Compound Zones
 - ▭ Indicative Zone Of Off Route Access
 - ▭ Indicative Permanent Drainage Connections
 - ▭ Indicative Road Construction Area
 - ▭ Indicative Permanent Drainage Basins
 - ▭ Indicative Substation Temporary Construction Compound
 - ▭ Indicative Earthworks Extents

Notes:
 All tree locations have been plotted using aerial imagery only, hence the positions of constraints are accurate to approximately +/- 3 metres. Locations of any individual trees within tree groups are indicative only.

Tree reference numbers marked with an asterisk symbol (e.g. G25*) are protected by Tree Preservation Order No. 259 at the Former Broadgates Hospital.

Please refer to the Tree Survey Schedule for full British Standard 5837:2012 tree survey data.

Tree constraints are reflective of tree surveys undertaken between April 2024 – July 2024.

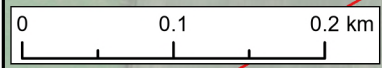
SUI	REV	DATE	DESCRIPTION	DRW	CHK	APR
S2	P02	7/10/2024	Suitable for Information	BH	AL	AL
S2	P01	3/9/2024	Suitable for Information	BH	AL	AL

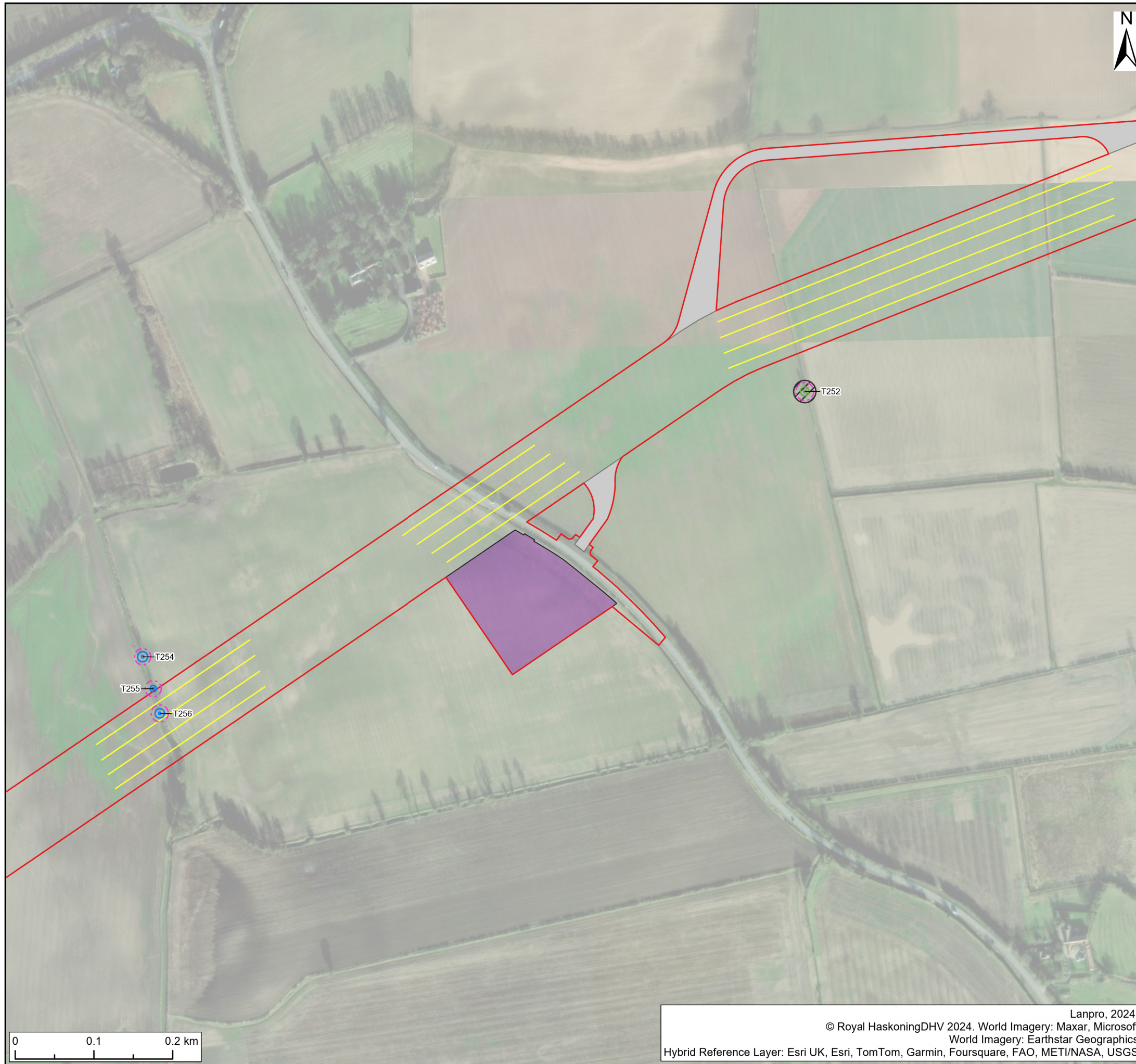
Title:
**Preliminary Tree Impact Plan
 Sheet 13**

Figure: 1-27 Drawing No: PC2340-LAN-ON-ZZ-DR-Z-0002

Co-ordinate system: British National Grid Page Size: A3 Scale: 1:5,000

Project: Dogger Bank South Offshore Wind Farms Report: Arboricultural Survey Report and Preliminary Arboricultural Impact Assessment





- Legend:**
- Stem Positions
 - Category A tree (high quality)
 - Category B tree (moderate quality)
 - Category C tree (low quality)
 - Category U tree (very low quality)
 - + Tree/tree group to be removed
 - Canopy Spread
 - Category A tree (high quality)
 - Category B tree (moderate quality)
 - Category C tree (low quality)
 - Category U tree (very low quality)
 - Tree/tree group to be removed
 - ▨ Tree Pruning
 - ▨ Root Protection Areas
 - ▨ Potential Root Impacts
 - ▨ Veteran Tree Buffer
 - ▨ Onshore Development Area
 - ▨ Indicative Trenchless Crossing Alignment
 - ▨ Indicative Temporary Construction Compound Zones
 - ▨ Indicative Zone Of Off Route Access
 - ▨ Indicative Permanent Drainage Connections
 - ▨ Indicative Road Construction Area
 - ▨ Indicative Permanent Drainage Basins
 - ▨ Indicative Substation Temporary Construction Compound
 - ▨ Indicative Earthworks Extents

Notes:
 All tree locations have been plotted using aerial imagery only, hence the positions of constraints are accurate to approximately +/- 3 metres. Locations of any individual trees within tree groups are indicative only.

Tree reference numbers marked with an asterisk symbol (e.g. G25*) are protected by Tree Preservation Order No. 259 at the Former Broadgates Hospital.

Please refer to the Tree Survey Schedule for full British Standard 5837:2012 tree survey data.

Tree constraints are reflective of tree surveys undertaken between April 2024 – July 2024.

SUI	REV	DATE	DESCRIPTION	DRW	CHK	APR
S2	P02	7/10/2024	Suitable for Information	BH	AL	AL
S2	P01	3/9/2024	Suitable for Information	BH	AL	AL

Title:
 Preliminary Tree Impact Plan
 Sheet 14

Figure: 1-27 Drawing No: PC2340-LAN-ON-ZZ-DR-Z-0002

Co-ordinate system: British National Grid Page Size: A3 Scale: 1:5,000

Project: Dogger Bank South Offshore Wind Farms Report: Arboricultural Survey Report and Preliminary Arboricultural Impact Assessment





- Legend:**
- Stem Positions
 - Category A tree (high quality)
 - Category B tree (moderate quality)
 - Category C tree (low quality)
 - Category U tree (very low quality)
 - + Tree/tree group to be removed
 - Canopy Spread
 - Category A tree (high quality)
 - Category B tree (moderate quality)
 - Category C tree (low quality)
 - Category U tree (very low quality)
 - Tree/tree group to be removed
 - Tree Pruning
 - Root Protection Areas
 - Potential Root Impacts
 - ▨ Veteran Tree Buffer
 - ▭ Onshore Development Area
 - ▭ Indicative Trenchless Crossing Alignment
 - ▭ Indicative Temporary Construction Compound Zones
 - ▭ Indicative Zone Of Off Route Access
 - ▭ Indicative Permanent Drainage Connections
 - ▭ Indicative Road Construction Area
 - ▭ Indicative Permanent Drainage Basins
 - ▭ Indicative Substation Temporary Construction Compound
 - ▭ Indicative Earthworks Extents

Notes:
 All tree locations have been plotted using aerial imagery only, hence the positions of constraints are accurate to approximately +/- 3 metres. Locations of any individual trees within tree groups are indicative only.

Tree reference numbers marked with an asterisk symbol (e.g. G25*) are protected by Tree Preservation Order No. 259 at the Former Broadgates Hospital.

Please refer to the Tree Survey Schedule for full British Standard 5837:2012 tree survey data.

Tree constraints are reflective of tree surveys undertaken between April 2024 – July 2024.

SUI	REV	DATE	DESCRIPTION	DRW	CHK	APR
S2	P02	7/10/2024	Suitable for Information	BH	AL	AL
S2	P01	3/9/2024	Suitable for Information	BH	AL	AL

Title:
**Preliminary Tree Impact Plan
 Sheet 15**

Figure: 1-27 Drawing No: PC2340-LAN-ON-ZZ-DR-Z-0002

Co-ordinate system: British National Grid Page Size: A3 Scale: 1:5,000

Project: **Dogger Bank South Offshore Wind Farms** Report: **Arboricultural Survey Report and Preliminary Arboricultural Impact Assessment**





- Legend:**
- Stem Positions
 - Category A tree (high quality)
 - Category B tree (moderate quality)
 - Category C tree (low quality)
 - Category U tree (very low quality)
 - + Tree/tree group to be removed
 - Canopy Spread
 - Category A tree (high quality)
 - Category B tree (moderate quality)
 - Category C tree (low quality)
 - Category U tree (very low quality)
 - Tree/tree group to be removed
 - Tree Pruning
 - Root Protection Areas
 - Potential Root Impacts
 - ▨ Veteran Tree Buffer
 - ▭ Onshore Development Area
 - ▭ Indicative Trenchless Crossing Alignment
 - ▭ Indicative Temporary Construction Compound Zones
 - ▭ Indicative Zone Of Off Route Access
 - ▭ Indicative Permanent Drainage Connections
 - ▭ Indicative Road Construction Area
 - ▭ Indicative Permanent Drainage Basins
 - ▭ Indicative Substation Temporary Construction Compound
 - ▭ Indicative Earthworks Extents

Notes:
 All tree locations have been plotted using aerial imagery only, hence the positions of constraints are accurate to approximately +/- 3 metres. Locations of any individual trees within tree groups are indicative only.

Tree reference numbers marked with an asterisk symbol (e.g. G25*) are protected by Tree Preservation Order No. 259 at the Former Broadgates Hospital.

Please refer to the Tree Survey Schedule for full British Standard 5837:2012 tree survey data.

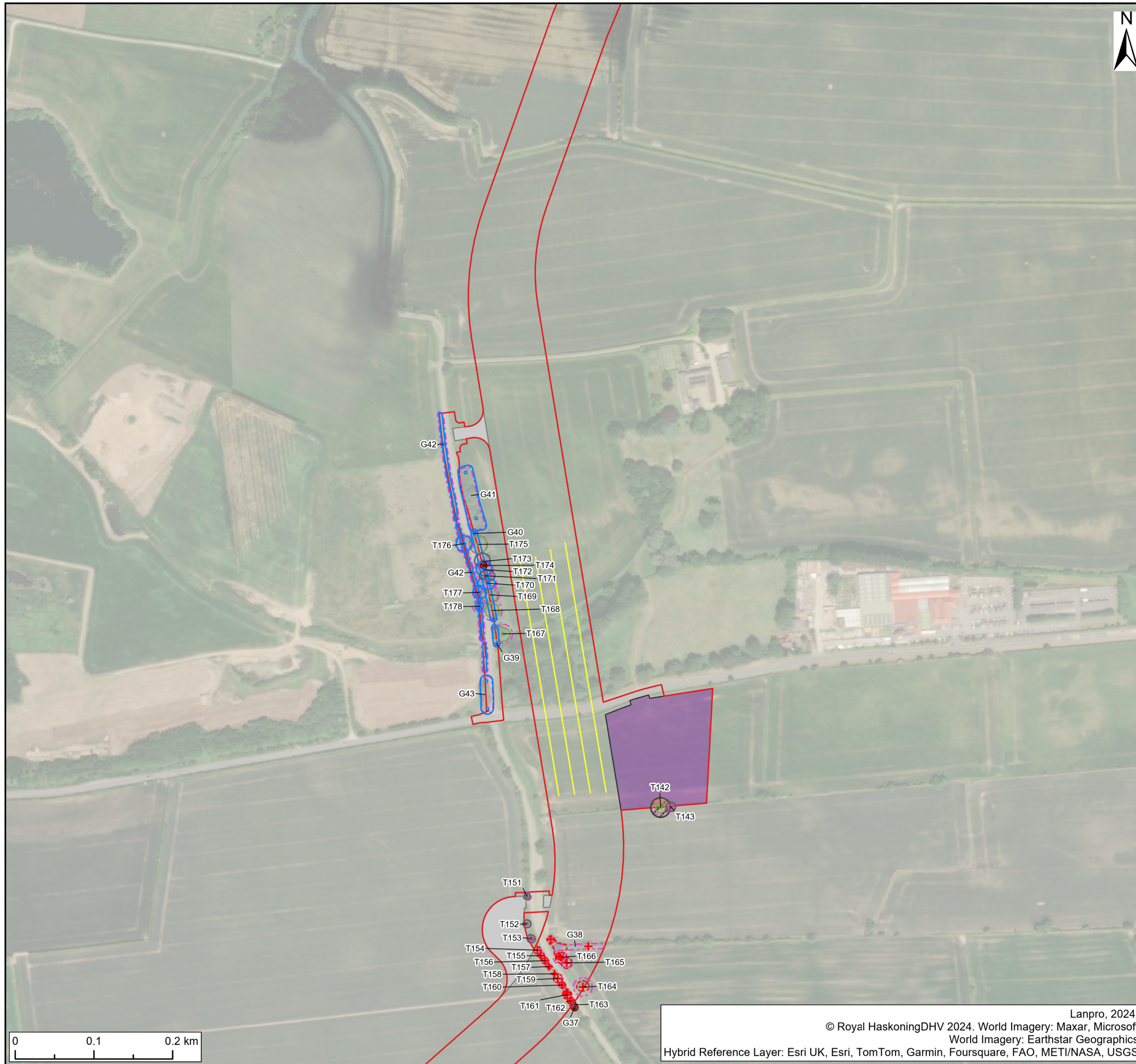
Tree constraints are reflective of tree surveys undertaken between April 2024 – July 2024.

SUI	REV	DATE	DESCRIPTION	DRW	CHK	APR
S2	P02	7/10/2024	Suitable for Information	BH	AL	AL
S2	P01	3/9/2024	Suitable for Information	BH	AL	AL

Title:
 Preliminary Tree Impact Plan
 Sheet 16

Figure: 1-27	Drawing No: PC2340-LAN-ON-ZZ-DR-Z-0002	
Co-ordinate system: British National Grid	Page Size: A3	Scale: 1:5,000
Project: Dogger Bank South Offshore Wind Farms	Report: Arboricultural Survey Report and Preliminary Arboricultural Impact Assessment	





- Legend:**
- Stem Positions
 - Category A tree (high quality)
 - Category B tree (moderate quality)
 - Category C tree (low quality)
 - Category U tree (very low quality)
 - ⊕ Tree/tree group to be removed
 - Canopy Spread
 - Category A tree (high quality)
 - Category B tree (moderate quality)
 - Category C tree (low quality)
 - Category U tree (very low quality)
 - Tree/tree group to be removed
 - Tree Pruning
 - Root Protection Areas
 - Potential Root Impacts
 - ▨ Veteran Tree Buffer
 - ▭ Onshore Development Area
 - ▭ Indicative Trenchless Crossing Alignment
 - ▭ Indicative Temporary Construction Compound Zones
 - ▭ Indicative Zone Of Off Route Access
 - ▭ Indicative Permanent Drainage Connections
 - ▭ Indicative Road Construction Area
 - ▭ Indicative Permanent Drainage Basins
 - ▭ Indicative Substation Temporary Construction Compound
 - ▭ Indicative Earthworks Extents

Notes:
 All tree locations have been plotted using aerial imagery only, hence the positions of constraints are accurate to approximately +/- 3 metres. Locations of any individual trees within tree groups are indicative only.

Tree reference numbers marked with an asterisk symbol (e.g. G25*) are protected by Tree Preservation Order No. 259 at the Former Broadgates Hospital.

Please refer to the Tree Survey Schedule for full British Standard 5837:2012 tree survey data.

Tree constraints are reflective of tree surveys undertaken between April 2024 – July 2024.

SUI	REV	DATE	DESCRIPTION	DRW	CHK	APR
S2	P02	7/10/2024	Suitable for Information	BH	AL	AL
S2	P01	3/9/2024	Suitable for Information	BH	AL	AL

Title:
**Preliminary Tree Impact Plan
 Sheet 17**

Figure: 1-27 Drawing No: PC2340-LAN-ON-ZZ-DR-Z-0002

Co-ordinate system: British National Grid Page Size: A3 Scale: 1:5,000

Project: **Dogger Bank South Offshore Wind Farms** Report: **Arboricultural Survey Report and Preliminary Arboricultural Impact Assessment**





- Legend:**
- Stem Positions
 - Category A tree (high quality)
 - Category B tree (moderate quality)
 - Category C tree (low quality)
 - Category U tree (very low quality)
 - + Tree/tree group to be removed
 - Canopy Spread
 - Category A tree (high quality)
 - Category B tree (moderate quality)
 - Category C tree (low quality)
 - Category U tree (very low quality)
 - Tree/tree group to be removed
 - ▨ Tree Pruning
 - ▨ Root Protection Areas
 - ▨ Potential Root Impacts
 - ▨ Veteran Tree Buffer
 - ▨ Onshore Development Area
 - ▨ Indicative Trenchless Crossing Alignment
 - ▨ Indicative Temporary Construction Compound Zones
 - ▨ Indicative Zone Of Off Route Access
 - ▨ Indicative Permanent Drainage Connections
 - ▨ Indicative Road Construction Area
 - ▨ Indicative Permanent Drainage Basins
 - ▨ Indicative Substation Temporary Construction Compound
 - ▨ Indicative Earthworks Extents

Notes:
 All tree locations have been plotted using aerial imagery only, hence the positions of constraints are accurate to approximately +/- 3 metres. Locations of any individual trees within tree groups are indicative only.

Tree reference numbers marked with an asterisk symbol (e.g. G25*) are protected by Tree Preservation Order No. 259 at the Former Broadgates Hospital.

Please refer to the Tree Survey Schedule for full British Standard 5837:2012 tree survey data.

Tree constraints are reflective of tree surveys undertaken between April 2024 – July 2024.

SUI	REV	DATE	DESCRIPTION	DRW	CHK	APR
S2	P02	7/10/2024	Suitable for Information	BH	AL	AL
S2	P01	3/9/2024	Suitable for Information	BH	AL	AL

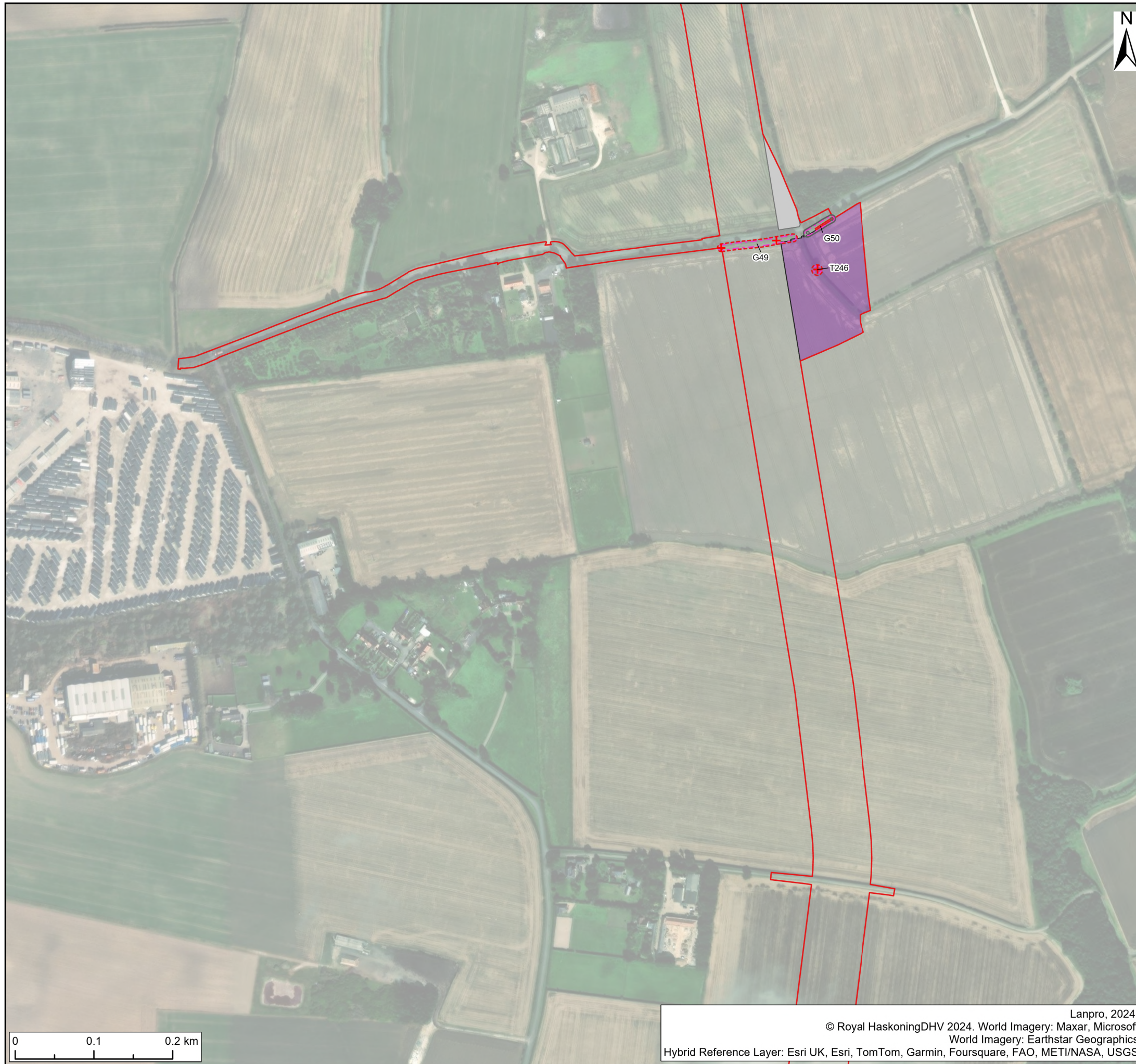
Title:
 Preliminary Tree Impact Plan
 Sheet 18

Figure: 1-27 Drawing No: PC2340-LAN-ON-ZZ-DR-Z-0002

Co-ordinate system: British National Grid Page Size: A3 Scale: 1:5,000

Project: Dogger Bank South Offshore Wind Farms Report: Arboricultural Survey Report and Preliminary Arboricultural Impact Assessment





- Legend:**
- | | | |
|----------------|---|--|
| Stem Positions | <ul style="list-style-type: none"> ● Category A tree (high quality) ● Category B tree (moderate quality) ● Category C tree (low quality) ● Category U tree (very low quality) + Tree/tree group to be removed | <ul style="list-style-type: none"> ▨ Veteran Tree Buffer ▭ Onshore Development Area — Indicative Trenchless Crossing Alignment ▭ Indicative Temporary Construction Compound Zones ▭ Indicative Zone Of Off Route Access — Indicative Permanent Drainage Connections ▭ Indicative Road Construction Area ▭ Indicative Permanent Drainage Basins ▭ Indicative Substation Temporary Construction Compound ▭ Indicative Earthworks Extents |
| Canopy Spread | <ul style="list-style-type: none"> ▭ Category A tree (high quality) ▭ Category B tree (moderate quality) ▭ Category C tree (low quality) ▭ Category U tree (very low quality) ▭ Tree/tree group to be removed ▭ Tree Pruning ▭ Root Protection Areas ▭ Potential Root Impacts | |

Notes:
 All tree locations have been plotted using aerial imagery only, hence the positions of constraints are accurate to approximately +/- 3 metres. Locations of any individual trees within tree groups are indicative only.

Tree reference numbers marked with an asterisk symbol (e.g. G25*) are protected by Tree Preservation Order No. 259 at the Former Broadgates Hospital.

Please refer to the Tree Survey Schedule for full British Standard 5837:2012 tree survey data.

Tree constraints are reflective of tree surveys undertaken between April 2024 – July 2024.

SUI	REV	DATE	DESCRIPTION	DRW	CHK	APR
S2	P02	7/10/2024	Suitable for Information	BH	AL	AL
S2	P01	3/9/2024	Suitable for Information	BH	AL	AL

Title:
**Preliminary Tree Impact Plan
 Sheet 19**

Figure: 1-27 Drawing No: PC2340-LAN-ON-ZZ-DR-Z-0002

Co-ordinate system: British National Grid	Page Size: A3	Scale: 1:5,000
--	------------------	-------------------

Project: Dogger Bank South Offshore Wind Farms	Report: Arboricultural Survey Report and Preliminary Arboricultural Impact Assessment
--	--





Legend:

- | | | |
|--|--|--|
| <ul style="list-style-type: none"> Stem Positions ○ Category A tree (high quality) ● Category B tree (moderate quality) ○ Category C tree (low quality) ○ Category U tree (very low quality) + Tree/tree group to be removed | <ul style="list-style-type: none"> Canopy Spread □ Category A tree (high quality) □ Category B tree (moderate quality) □ Category C tree (low quality) □ Category U tree (very low quality) □ Tree/tree group to be removed □ Tree Pruning □ Root Protection Areas □ Potential Root Impacts | <ul style="list-style-type: none"> ▨ Veteran Tree Buffer ▭ Onshore Development Area — Indicative Trenchless Crossing Alignment ▭ Indicative Temporary Construction Compound Zones ▭ Indicative Zone Of Off Route Access — Indicative Permanent Drainage Connections ▭ Indicative Road Construction Area ▭ Indicative Permanent Drainage Basins ▭ Indicative Substation Temporary Construction Compound ▭ Indicative Earthworks Extents |
|--|--|--|

Notes:

All tree locations have been plotted using aerial imagery only, hence the positions of constraints are accurate to approximately +/- 3 metres. Locations of any individual trees within tree groups are indicative only.

Tree reference numbers marked with an asterisk symbol (e.g. G25*) are protected by Tree Preservation Order No. 259 at the Former Broadgates Hospital.

Please refer to the Tree Survey Schedule for full British Standard 5837:2012 tree survey data.

Tree constraints are reflective of tree surveys undertaken between April 2024 – July 2024.

SUI	REV	DATE	DESCRIPTION	DRW	CHK	APR
S2	P02	7/10/2024	Suitable for Information	BH	AL	AL
S2	P01	3/9/2024	Suitable for Information	BH	AL	AL

Title:
**Preliminary Tree Impact Plan
Sheet 20**

Figure: 1-27 Drawing No: PC2340-LAN-ON-ZZ-DR-Z-0002

Co-ordinate system: British National Grid	Page Size: A3	Scale: 1:5,000
--	------------------	-------------------

Project: Dogger Bank South Offshore Wind Farms	Report: Arboricultural Survey Report and Preliminary Arboricultural Impact Assessment
--	--





- Legend:**
- Stem Positions
 - Category A tree (high quality)
 - Category B tree (moderate quality)
 - Category C tree (low quality)
 - Category U tree (very low quality)
 - Tree/tree group to be removed
 - Canopy Spread
 - Category A tree (high quality)
 - Category B tree (moderate quality)
 - Category C tree (low quality)
 - Category U tree (very low quality)
 - Tree/tree group to be removed
 - Tree Pruning
 - Root Protection Areas
 - Potential Root Impacts
 - Veteran Tree Buffer
 - Onshore Development Area
 - Indicative Trenchless Crossing Alignment
 - Indicative Temporary Construction Compound Zones
 - Indicative Zone Of Off Route Access
 - Indicative Permanent Drainage Connections
 - Indicative Road Construction Area
 - Indicative Permanent Drainage Basins
 - Indicative Substation Temporary Construction Compound
 - Indicative Earthworks Extents

Notes:
 All tree locations have been plotted using aerial imagery only, hence the positions of constraints are accurate to approximately +/- 3 metres. Locations of any individual trees within tree groups are indicative only.

Tree reference numbers marked with an asterisk symbol (e.g. G25*) are protected by Tree Preservation Order No. 259 at the Former Broadgates Hospital.

Please refer to the Tree Survey Schedule for full British Standard 5837:2012 tree survey data.

Tree constraints are reflective of tree surveys undertaken between April 2024 – July 2024.

SUI	REV	DATE	DESCRIPTION	DRW	CHK	APR
S2	P02	7/10/2024	Suitable for Information	BH	AL	AL
S2	P01	3/9/2024	Suitable for Information	BH	AL	AL

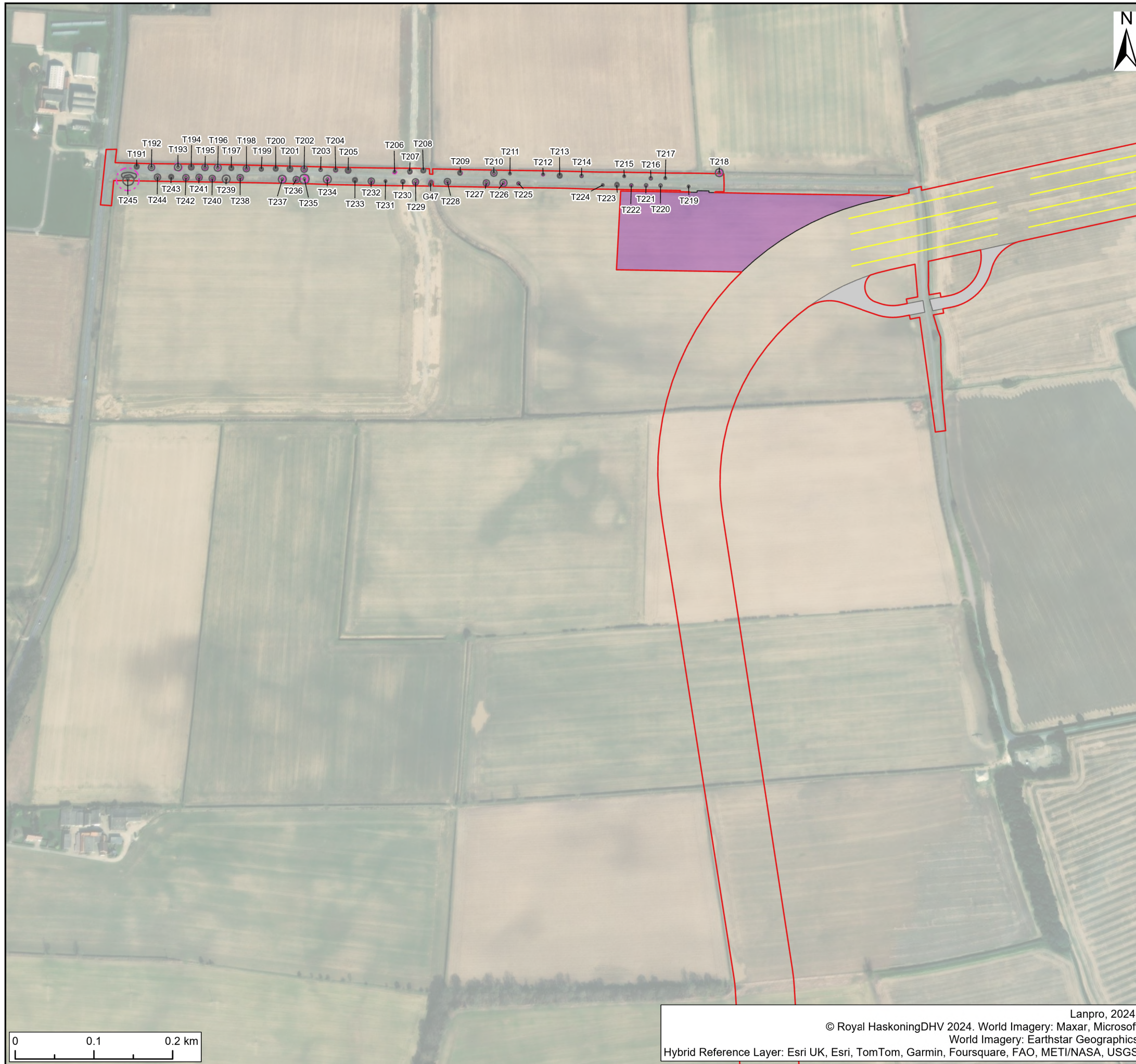
Title:
**Preliminary Tree Impact Plan
 Sheet 21**

Figure: 1-27 Drawing No: PC2340-LAN-ON-ZZ-DR-Z-0002

Co-ordinate system: British National Grid Page Size: A3 Scale: 1:5,000

Project: **Dogger Bank South Offshore Wind Farms** Report: **Arboricultural Survey Report and Preliminary Arboricultural Impact Assessment**





- Legend:**
- Stem Positions
 - Category A tree (high quality)
 - Category B tree (moderate quality)
 - Category C tree (low quality)
 - Category U tree (very low quality)
 - + Tree/tree group to be removed
 - Canopy Spread
 - Category A tree (high quality)
 - Category B tree (moderate quality)
 - Category C tree (low quality)
 - Category U tree (very low quality)
 - Tree/tree group to be removed
 - Tree Pruning
 - Root Protection Areas
 - Potential Root Impacts
 - ▨ Veteran Tree Buffer
 - ▭ Onshore Development Area
 - ▭ Indicative Trenchless Crossing Alignment
 - ▭ Indicative Temporary Construction Compound Zones
 - ▭ Indicative Zone Of Off Route Access
 - ▭ Indicative Permanent Drainage Connections
 - ▭ Indicative Road Construction Area
 - ▭ Indicative Permanent Drainage Basins
 - ▭ Indicative Substation Temporary Construction Compound
 - ▭ Indicative Earthworks Extents

Notes:
 All tree locations have been plotted using aerial imagery only, hence the positions of constraints are accurate to approximately +/- 3 metres. Locations of any individual trees within tree groups are indicative only.

Tree reference numbers marked with an asterisk symbol (e.g. G25*) are protected by Tree Preservation Order No. 259 at the Former Broadgates Hospital.

Please refer to the Tree Survey Schedule for full British Standard 5837:2012 tree survey data.

Tree constraints are reflective of tree surveys undertaken between April 2024 – July 2024.

SUI	REV	DATE	DESCRIPTION	DRW	CHK	APR
S2	P02	7/10/2024	Suitable for Information	BH	AL	AL
S2	P01	3/9/2024	Suitable for Information	BH	AL	AL

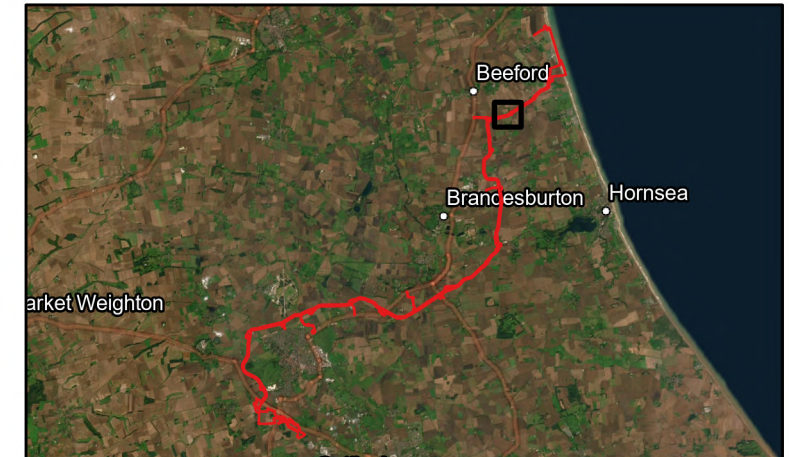
Title:
**Preliminary Tree Impact Plan
 Sheet 22**

Figure: 1-27 Drawing No: PC2340-LAN-ON-ZZ-DR-Z-0002

Co-ordinate system: British National Grid Page Size: A3 Scale: 1:5,000

Project: Dogger Bank South Offshore Wind Farms Report: Arboricultural Survey Report and Preliminary Arboricultural Impact Assessment





- Legend:**
- Stem Positions
 - Category A tree (high quality)
 - Category B tree (moderate quality)
 - Category C tree (low quality)
 - Category U tree (very low quality)
 - + Tree/tree group to be removed
 - Canopy Spread
 - Category A tree (high quality)
 - Category B tree (moderate quality)
 - Category C tree (low quality)
 - Category U tree (very low quality)
 - Tree/tree group to be removed
 - Tree Pruning
 - Root Protection Areas
 - Potential Root Impacts
 - ▨ Veteran Tree Buffer
 - ▭ Onshore Development Area
 - ▭ Indicative Trenchless Crossing Alignment
 - ▭ Indicative Temporary Construction Compound Zones
 - ▭ Indicative Zone Of Off Route Access
 - ▭ Indicative Permanent Drainage Connections
 - ▭ Indicative Road Construction Area
 - ▭ Indicative Permanent Drainage Basins
 - ▭ Indicative Substation Temporary Construction Compound
 - ▭ Indicative Earthworks Extents

Notes:
 All tree locations have been plotted using aerial imagery only, hence the positions of constraints are accurate to approximately +/- 3 metres. Locations of any individual trees within tree groups are indicative only.

Tree reference numbers marked with an asterisk symbol (e.g. G25*) are protected by Tree Preservation Order No. 259 at the Former Broadgates Hospital.

Please refer to the Tree Survey Schedule for full British Standard 5837:2012 tree survey data.

Tree constraints are reflective of tree surveys undertaken between April 2024 – July 2024.

SUI	REV	DATE	DESCRIPTION	DRW	CHK	APR
S2	P02	7/10/2024	Suitable for Information	BH	AL	AL
S2	P01	3/9/2024	Suitable for Information	BH	AL	AL

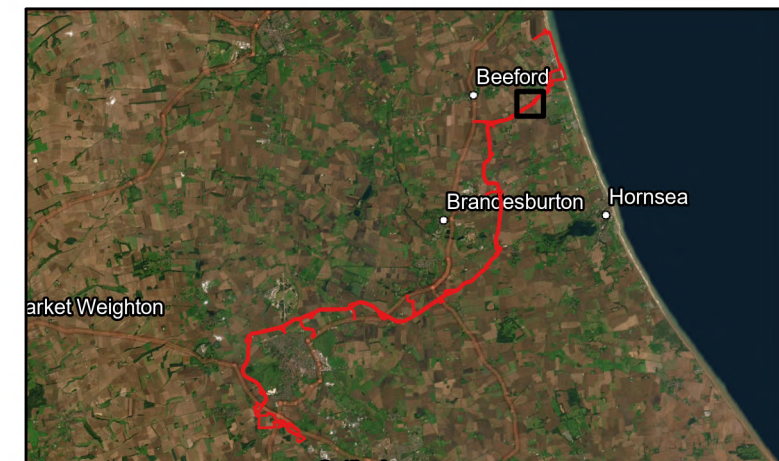
Title:
**Preliminary Tree Impact Plan
 Sheet 23**

Figure: 1-27 Drawing No: PC2340-LAN-ON-ZZ-DR-Z-0002

Co-ordinate system: British National Grid Page Size: A3 Scale: 1:5,000

Project: **Dogger Bank South Offshore Wind Farms** Report: **Arboricultural Survey Report and Preliminary Arboricultural Impact Assessment**





- Legend:**
- Stem Positions
 - Category A tree (high quality)
 - ◆ Category B tree (moderate quality)
 - ◊ Category C tree (low quality)
 - ◐ Category U tree (very low quality)
 - ⊕ Tree/tree group to be removed
 - Canopy Spread
 - Category A tree (high quality)
 - Category B tree (moderate quality)
 - Category C tree (low quality)
 - Category U tree (very low quality)
 - Tree/tree group to be removed
 - Tree Pruning
 - Root Protection Areas
 - Potential Root Impacts
 - Veteran Tree Buffer
 - Onshore Development Area
 - Indicative Trenchless Crossing Alignment
 - Indicative Temporary Construction Compound Zones
 - Indicative Zone Of Off Route Access
 - Indicative Permanent Drainage Connections
 - Indicative Road Construction Area
 - Indicative Permanent Drainage Basins
 - Indicative Substation Temporary Construction Compound
 - Indicative Earthworks Extents

Notes:
 All tree locations have been plotted using aerial imagery only, hence the positions of constraints are accurate to approximately +/- 3 metres. Locations of any individual trees within tree groups are indicative only.

Tree reference numbers marked with an asterisk symbol (e.g. G25*) are protected by Tree Preservation Order No. 259 at the Former Broadgates Hospital.

Please refer to the Tree Survey Schedule for full British Standard 5837:2012 tree survey data.

Tree constraints are reflective of tree surveys undertaken between April 2024 – July 2024.

SUI	REV	DATE	DESCRIPTION	DRW	CHK	APR
S2	P02	7/10/2024	Suitable for Information	BH	AL	AL
S2	P01	3/9/2024	Suitable for Information	BH	AL	AL

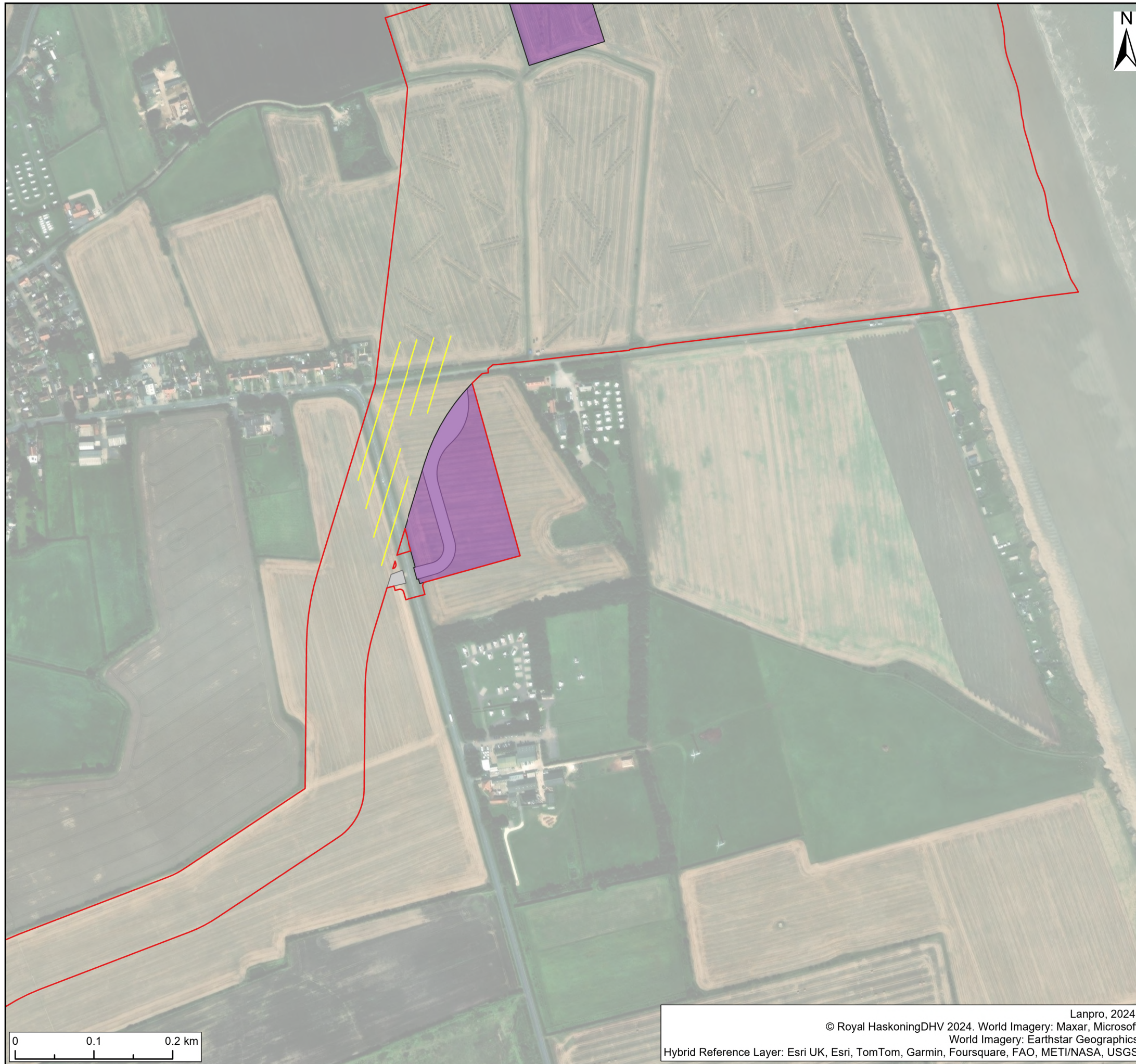
Title:
 Preliminary Tree Impact Plan
 Sheet 24

Figure: 1-27 Drawing No: PC2340-LAN-ON-ZZ-DR-Z-0002

Co-ordinate system: British National Grid Page Size: A3 Scale: 1:5,000

Project: Dogger Bank South Offshore Wind Farms Report: Arboricultural Survey Report and Preliminary Arboricultural Impact Assessment





- Legend:**
- Stem Positions
 - Category A tree (high quality)
 - Category B tree (moderate quality)
 - Category C tree (low quality)
 - Category U tree (very low quality)
 - + Tree/tree group to be removed
 - Canopy Spread
 - Category A tree (high quality)
 - Category B tree (moderate quality)
 - Category C tree (low quality)
 - Category U tree (very low quality)
 - Tree/tree group to be removed
 - Tree Pruning
 - Root Protection Areas
 - Potential Root Impacts
 - ▨ Veteran Tree Buffer
 - ▭ Onshore Development Area
 - ▭ Indicative Trenchless Crossing Alignment
 - ▭ Indicative Temporary Construction Compound Zones
 - ▭ Indicative Zone Of Off Route Access
 - ▭ Indicative Permanent Drainage Connections
 - ▭ Indicative Road Construction Area
 - ▭ Indicative Permanent Drainage Basins
 - ▭ Indicative Substation Temporary Construction Compound
 - ▭ Indicative Earthworks Extents

Notes:
 All tree locations have been plotted using aerial imagery only, hence the positions of constraints are accurate to approximately +/- 3 metres. Locations of any individual trees within tree groups are indicative only.

Tree reference numbers marked with an asterisk symbol (e.g. G25*) are protected by Tree Preservation Order No. 259 at the Former Broadgates Hospital.

Please refer to the Tree Survey Schedule for full British Standard 5837:2012 tree survey data.

Tree constraints are reflective of tree surveys undertaken between April 2024 – July 2024.

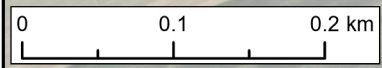
SUI	REV	DATE	DESCRIPTION	DRW	CHK	APR
S2	P02	7/10/2024	Suitable for Information	BH	AL	AL
S2	P01	3/9/2024	Suitable for Information	BH	AL	AL

Title:
 Preliminary Tree Impact Plan
 Sheet 25

Figure: 1-27 Drawing No: PC2340-LAN-ON-ZZ-DR-Z-0002

Co-ordinate system: British National Grid Page Size: A3 Scale: 1:5,000

Project: Dogger Bank South Offshore Wind Farms Report: Arboricultural Survey Report and Preliminary Arboricultural Impact Assessment





- Legend:**
- Stem Positions
 - Category A tree (high quality)
 - Category B tree (moderate quality)
 - Category C tree (low quality)
 - Category U tree (very low quality)
 - Tree/tree group to be removed
 - Canopy Spread
 - Category A tree (high quality)
 - Category B tree (moderate quality)
 - Category C tree (low quality)
 - Category U tree (very low quality)
 - Tree/tree group to be removed
 - Tree Pruning
 - Root Protection Areas
 - Potential Root Impacts
 - ▨ Veteran Tree Buffer
 - ▭ Onshore Development Area
 - ▭ Indicative Trenchless Crossing Alignment
 - ▭ Indicative Temporary Construction Compound Zones
 - ▭ Indicative Zone Of Off Route Access
 - ▭ Indicative Permanent Drainage Connections
 - ▭ Indicative Road Construction Area
 - ▭ Indicative Permanent Drainage Basins
 - ▭ Indicative Substation Temporary Construction Compound
 - ▭ Indicative Earthworks Extents

Notes:
 All tree locations have been plotted using aerial imagery only, hence the positions of constraints are accurate to approximately +/- 3 metres. Locations of any individual trees within tree groups are indicative only.

Tree reference numbers marked with an asterisk symbol (e.g. G25*) are protected by Tree Preservation Order No. 259 at the Former Broadgates Hospital.

Please refer to the Tree Survey Schedule for full British Standard 5837:2012 tree survey data.

Tree constraints are reflective of tree surveys undertaken between April 2024 – July 2024.

SUI	REV	DATE	DESCRIPTION	DRW	CHK	APR
S2	P02	7/10/2024	Suitable for Information	BH	AL	AL
S2	P01	3/9/2024	Suitable for Information	BH	AL	AL

Title:
**Preliminary Tree Impact Plan
 Sheet 26**

Figure: 1-27 Drawing No: PC2340-LAN-ON-ZZ-DR-Z-0002

Co-ordinate system: British National Grid Page Size: A3 Scale: 1:5,000

Project: **Dogger Bank South Offshore Wind Farms** Report: **Arboricultural Survey Report and Preliminary Arboricultural Impact Assessment**





- Legend:**
- Stem Positions
 - Category A tree (high quality)
 - Category B tree (moderate quality)
 - Category C tree (low quality)
 - Category U tree (very low quality)
 - Tree/tree group to be removed
 - Canopy Spread
 - Category A tree (high quality)
 - Category B tree (moderate quality)
 - Category C tree (low quality)
 - Category U tree (very low quality)
 - Tree/tree group to be removed
 - Tree Pruning
 - Root Protection Areas
 - Potential Root Impacts
 - ▨ Veteran Tree Buffer
 - ▭ Onshore Development Area
 - ▭ Indicative Trenchless Crossing Alignment
 - ▭ Indicative Temporary Construction Compound Zones
 - ▭ Indicative Zone Of Off Route Access
 - ▭ Indicative Permanent Drainage Connections
 - ▭ Indicative Road Construction Area
 - ▭ Indicative Permanent Drainage Basins
 - ▭ Indicative Substation Temporary Construction Compound
 - ▭ Indicative Earthworks Extents

Notes:
 All tree locations have been plotted using aerial imagery only, hence the positions of constraints are accurate to approximately +/- 3 metres. Locations of any individual trees within tree groups are indicative only.

Tree reference numbers marked with an asterisk symbol (e.g. G25*) are protected by Tree Preservation Order No. 259 at the Former Broadgates Hospital.

Please refer to the Tree Survey Schedule for full British Standard 5837:2012 tree survey data.

Tree constraints are reflective of tree surveys undertaken between April 2024 – July 2024.

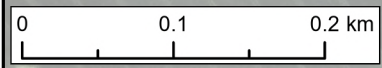
SUI	REV	DATE	DESCRIPTION	DRW	CHK	APR
S2	P02	7/10/2024	Suitable for Information	BH	AL	AL
S2	P01	3/9/2024	Suitable for Information	BH	AL	AL

Title:
 Preliminary Tree Impact Plan
 Sheet 27

Figure: 1-27 Drawing No: PC2340-LAN-ON-ZZ-DR-Z-0002

Co-ordinate system: British National Grid Page Size: A3 Scale: 1:5,000

Project: Dogger Bank South Offshore Wind Farms Report: Arboricultural Survey Report and Preliminary Arboricultural Impact Assessment



Appendix 6. References

- Ref.1 Forestry Commission (30 April 2020). Operations Note 046b – Restocking Woodland Following Loss of Ash Due to Ash Dieback.
- Ref.2 Ministry of Housing, Communities and Local Government (December 2023). National Planning Policy Framework.
- Ref.3 Department for Energy Security and Net Zero (March 2023). Overarching National Policy Statement for Energy (EN-1). Available at:
https://assets.publishing.service.gov.uk/media/64252f3b60a35e00120cb158/NPS_EN-1.pdf
- Ref.4 Department for Energy Security and Net Zero (March 2023). National Policy Statement for Renewable Energy Infrastructure (EN-3). Available at:
https://assets.publishing.service.gov.uk/media/64252f5f2fa848000cecof52/NPS_EN-3.pdf
- Ref.5 East Riding of Yorkshire Council (Adopted April 2016). East Riding Local Plan 2012-2029 – Strategy Document.
- Ref.6 Natural England and Forestry Commission. (Published 14 January 2022). Guidance – Ancient woodland, ancient trees and veteran trees: advice for making planning decisions. Available at: <https://www.gov.uk/guidance/ancient-woodland-ancient-trees-and-veteran-trees-advice-for-making-planning-decisions>
- Ref.7 Natural England. Ancient Woodland. Available at: <https://naturalengland-defra.opendata.arcgis.com/datasets/Defra::ancient-woodland-england/about>
- Ref.8 The Woodland Trust. Ancient Tree Inventory. Available at:
<https://ati.woodlandtrust.org.uk/tree-search/>
- Ref.9 Ministry of Housing, Communities and Local Government, Ministry of Housing, Communities & Local Government (2018 to 2021) and Department for Levelling Up, Housing and Communities (Published 6 March 2014). Tree Preservation Orders and Trees in Conservation Area. Available at: <https://www.gov.uk/guidance/tree-preservation-orders-and-trees-in-conservation-areas>
- Ref.10 BSI Standards Publication (April 2012). BS5837:2012 Trees in relation to design, demolition and construction – Recommendations.
- Ref.11 East Riding of Yorkshire District Council. Planning Constraints Map. Available at:
<https://www.eastriding.gov.uk/planning-permission-and-building-control/applications-for-planning-and-building-control/planning-constraints-map/planning-constraints-map-tool/>
- Ref.12 The Woodland Trust. Ancient Tree Inventory. Available at:
<https://ati.woodlandtrust.org.uk/tree->

search/?v=2607524&ml=map&z=13&nwLat=52.66835171878944&nwLng=1.1227987236328296
&seLat=52.59270959124916&seLng=1.4510152763672046

Ref.13 Natural England. MAGIC Maps. Available at:
<https://magic.defra.gov.uk/magicmap.aspx>

Ref.14 Quantum Geographic Information System (QGIS) (2024). Open Source Geospatial Founda-tion Project. Available at: <https://www.qgis.org/>

Ref.15 Ancient Tree Forum and The Woodland Trust. Ancient Tree Guide No. 4 – What are ancient, veteran and other trees of special interest? Available at:
<https://www.ancienttreeforum.org.uk/wp-content/uploads/2015/02/ancient-tree-guide-4-definitions.pdf>

Ref.16 Natural England (2000). Veteran Trees: A Guide to Good Management (IN13). Chapter 2. Available at: <https://publications.naturalengland.org.uk/publication/75035>

RWE Renewables UK Dogger Bank
South (West) Limited

RWE Renewables UK Dogger Bank
South (East) Limited

Windmill Business Park
Whitehill Way
Swindon
Wiltshire, SN5 6PB

RWE

MASDAR 